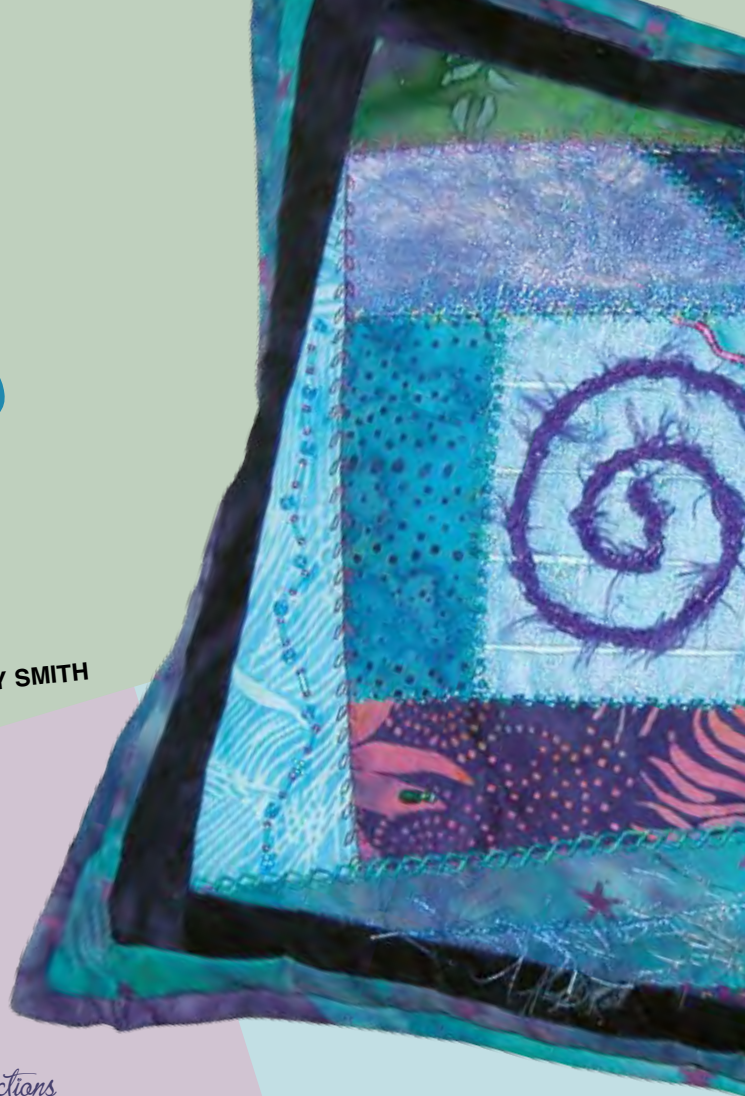


Crazy Patches Pillow

BY POSSIBILITIES® LYNDA MILLIGAN & NANCY SMITH

Who says quilt blocks can only be made from traditional woven fabrics? Create your own fantasy fabrics – sparkly, shiny, filmy – and combine them with colorful yarns, buttons, and beads to make this unique crazypatch pillow.



Materials

$\frac{1}{3}$ yard white solid cotton fabric
 $\frac{1}{8}$ yard each of 9 or more coordinating fabrics or scraps – purple & teal batik, rayon batik, lame
 $\frac{1}{8}$ yard each of 2 fabric for borders
 $\frac{1}{4}$ yard fabric for binding
 $\frac{3}{8}$ yard fabric for envelope back
 1 package of Mistyfuse™
 3 yards each – purple and teal $\frac{3}{4}$ " wide organdy ribbon
 Bondable Angelina Fiber in color "Calypso Blue"
 Fantasy Film in color "In the Forest"
 King Tut and other variegated threads
 Superior Metallics™ metallic thread
 Buttons, beads, fibers and/or yarns
 Hand sewing needle
 $12\frac{1}{2}$ " x $12\frac{1}{2}$ " square of thin cotton batting
 12" pillow form

Cutting Instructions

White Fabric: One 8" x 8" square;
 one $9\frac{1}{2}$ " x $9\frac{1}{2}$ " square
 Mistyfuse™: One 8" x 8" square
 Ribbon: Ten $8\frac{1}{2}$ " pieces from each color
 Inner Border Fabric: Two $1\frac{1}{4}$ " x 44" strips
 Outer Border Fabric: Two $1\frac{1}{4}$ " x 44" strips
 Binding Fabric: Two $2\frac{1}{2}$ " x 44" strips
 Envelope Back Fabric: Two 10" x $12\frac{1}{2}$ " rectangles

Directions

Use $\frac{1}{4}$ " seam allowance unless otherwise noted.

Creative "Fabrics"

Woven Organdy Ribbon

Place the 8" square of white fabric right side up on work surface. Place Mistyfuse™ square on top.

Place purple organdy ribbon pieces on Mistyfuse™, sides touching. Pin each ribbon to the white square at one end.

Weave teal ribbon pieces into purple ribbon pieces. Fuse with iron at Silk setting.

Cut a 3- to 5-sided piece approximately 4-5" in diameter for center of crazy quilt block. Set remaining fused ribbon aside to use in the crazy quilting.

Angelina Fiber

Press a small handful of Bondable Angelina Fiber between two appliqué sheets or two pieces of parchment paper, making sure the area covered is large enough to cut a strip approximately 3" x 7". Fuse with iron at Silk setting.

Fantasy Film

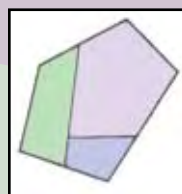
Cut a strip and use it as you would a fabric strip. When pressed (under a pressing sheet, iron set at Silk), it will crinkle nicely.



This pillow was made on an aurora 440QE and is embellished with the following stitches:



angles. Trim excess fabric at seam allowances as you go to prevent block from getting too bulky.



Trim overhanging strips to edge of white square.



Embellishments

Using variegated and metallic threads, stitch various decorative machine stitches along seam lines.

Couch or zigzag fibers along centers of strips or in spirals or other shapes across several strips.

Borders & Quilting

From inner border strips, cut two pieces 9 1/2" long and two pieces 11" long. Stitch short pieces to opposite sides of block. Press. Stitch long pieces to remaining sides. Press.

From outer border strips, cut two pieces 11" long and two pieces 12 1/2" long. Stitch short pieces to opposite sides of block. Press. Stitch long pieces to remaining sides. Press.

Place pillow top on batting. Press. Stitch-in-the-ditch along all border seams using Edgestitch Foot #10/10C, straight stitch, and a center needle position.

More Embellishments!

Hand stitch beads to pillow top in a line or in clusters down center of a strip. Make bead danglers and stitch to pillow top. Stitch buttons and beads in a stack.

Envelope Pillow

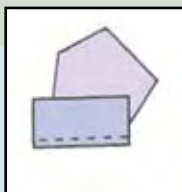
Make a 1" double hem on one 12 1/2" side of each pillow back piece. Press.

Place envelope back pieces wrong sides together with pillow top, raw edges even, hemmed edges overlapping in center. Baste outside edge with 1/8" seam allowance.

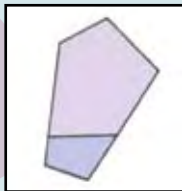
Stitch binding strips end to end. Press in half lengthwise, wrong sides together. Bind pillow using 3/8" seam allowances.

Crazy Quilted Block

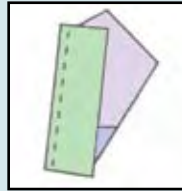
Place 9 1/2" white square right side up on work surface. Place fused ribbon center right side up on square, near the middle.



Place strip on center piece, right sides together, raw edges even. Stitch. Fold strip over and trim end.



Continue adding regular and creative fabric strips clockwise or counterclockwise. To get a variety of shapes, place strips at different



Visit www.bernausa.com for additional projects & information.