

# Waiting for Sunset










All Things Fashionable



By NINA MCVEIGH

*This beautiful quilt uses a traditional block, Drunkards Path in a contemporary way. The modern Bali Batiks, the random setting, appliquéd rectangles, and quilting in the machine embroidery hoop all work together to make this stunning study of warm colors playful and soothing at the same time.*

**The following tools and icons are used in designing and creating this quilt.**

-  Quilt Layout
-  Quilt Library
-  Auto Appliqué
-  Partial Appliqué
-  Open Object
-  Closed Object
-  Rectangle
-  Circle/Oval
-  Embroidery Window

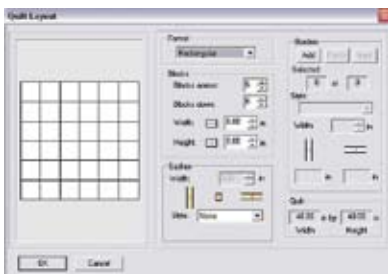
## Supplies

- ½ yard each of 8 Assorted Bali Fabrics
- ½ yard of fussy cut fabric for appliqué (Caryl Bryer Fallert's "Gradations" by Benartex used for the sample)
- ½ yard fabric for binding
- 3 yards backing fabric
- 54" square of batting
- Patchwork Foot with Guide #57
- Embroidery Foot #26
- BSR - BERNINA® Stitch Regulator #42
- Walking Foot #50
- #0 Brass Safety Pins for basting
- #70 Denim Needle for Piecing
- #80 Organ Needle for Embroidery
- OESD Aqua Mesh Stabilizer
- HR5 Temporary Spray Adhesive
- Assorted colors of Isacord Embroidery Thread
- Large Oval Embroidery Hoop
- Rotary Cutting Equipment
- BERNINA® Embroidery Software

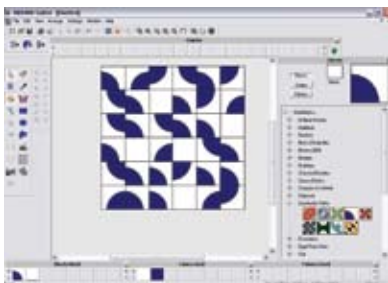


## Designing the Quilt

Begin by opening BERNINA® Embroidery Software and then the Quilter Program. Once the Quilter Program is open, select the Quilt Layout icon.



Place 6 blocks across and 6 blocks down; make the blocks 8". There is no sashing and there are no borders.



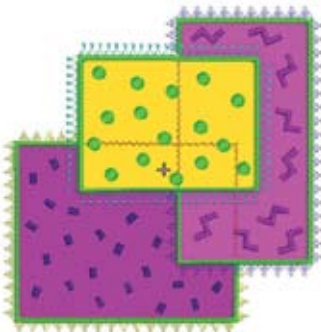
Select Library > Blocks > Drunkard's Path > Drunkard's Path 2. The block will open in the window at the top of the page. Click each square to add the blocks to the layout. Hint: If you hold down CTRL and ALT keys, all the blocks will be changed to Drunkard's Path. Remove a few of the Drunkard Path blocks so that some of the blocks are plain squares. Randomly change the direction of the blocks.

Select the Fabrics tab. Choose Benartex 2006 > Bali's Tutti-Frutti. Randomly fill blocks with the pink, purple and orange fabric prints. Save the quilt design and close the Quilter Program.

## Designing the Appliqué

With the BERNINA® Embroidery Software, you can design the appliqué shapes by using the Auto Appliqué and the Partial Appliqué features. Select the Auto Appliqué Tool and draw a rectangle. Follow the prompts in the Status Bar to create an appliqué. The software will automatically create a placement line, a tack down stitch and a cover stitch. Continue until you have 3 intersecting rectangles. Select All and right click for Object Properties. Change the cover stitch width to 2.5 and the tack down width to 2.0. With everything still selected, use Partial Appliqué Tool to remove stitching from overlapping areas.

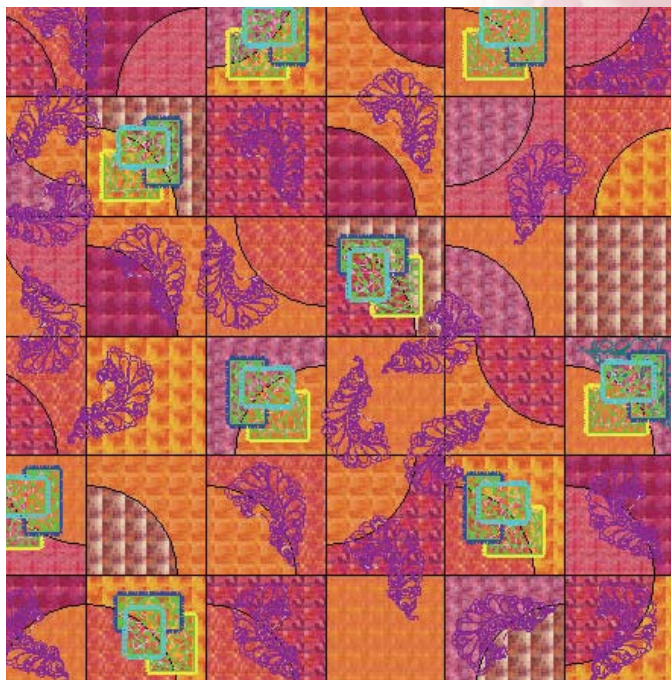
To add a decorative stitch around each appliqué, select the Open Object Tool. Draw a line around the satin stitch portion of the bottom rectangle



that shows. Select Outline Stitch > Pattern Run > Object Properties > Pattern Set > Heirloom > #a703. Change the color of the stitch to yellow. Repeat for the middle rectangle using Embellishment stitch #601 and color royal blue. The top rectangle may be drawn using the Closed Object Tool. Use Cross Stitch #313 and change the color to aqua blue.

Ideally these decorative stitches should be sewn between the tack down stitch and the cover stitch of each shape. To do this, select a rectangle making sure that it is ungrouped. Go to Arrange > Break Apart. You will now be able to place the decorative stitch for that rectangle between the tack down stitch and the cover stitch by clicking and dragging it in the Color Film bar.

To add colored fabrics to each rectangle choose Rectangle > Object Properties > Fabric > Choose. To put decorative stitches on the appliqué, select a rectangle. Using the Open Object tool draw a line about 1/4" long. While the line is selected, change from a single outline to satin. Scatter this stitch throughout the rectangle. This is easily done by cloning the stitch - right click on the shape and drag it to where you want another stitch. Repeat for the second rectangle making the line a small zigzag. For the third rectangle, use the circle tool and make a tiny circle using a satin stitch fill. Save your design.



Go back to the Quilter Program and open your quilt design. Add the appliqué to the quilt by clicking on the Embroidery Window Icon; the embroidery window will open. Go to File > Insert Design. Choose the appliqué design you just created for your quilt. Click on the quilt layout (still visible on screen), the appliqué design appears in the very small window. Click and drag to where you want it to appear. Copy and Paste additional appliqué designs randomly throughout the quilt. I used the design 9 times. You may add quilting with the motif of your choice. Save changes to your design.

Select Print Preview > Block Construction and print the Drunkard's Path Block pattern. Using the eight assorted Bali fabrics, cut out blocks and squares for quilt.



**Piecing the Quilt Top**

Piece the Drunkard's Path blocks using a #70 denim needle and the Patchwork Foot with Guide #57.



**Tips for piecing curved seams:**

- Place a pin at the center of the two curved edges to create a registration mark for matching.
- Sew with the outer curve on top of the inner curve, using a stiletto to help guide the fabric.
- Sew at a slow even speed, matching pins as you sew (remove pins as you reach them).
- Press the seams toward the outer curve.

Refer to the quilt layout (you may also want to print this for a reference) and join 6 blocks to make a row. Make 6 rows and stitch the rows together to make a 6 x 6 block top.

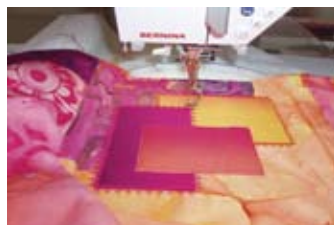
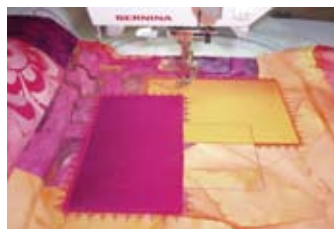
**Machine Embroidered Appliqué**

Attach the embroidery module to the machine. Insert a #80 Organ needle. Transfer the appliqué design you created in the BERNINA® Embroidery Software to the machine.

Hoop the Aqua Mesh stabilizer in the large oval hoop; spray the stabilizer with the HR5 Temporary Spray Adhesive. Lay the area of the quilt you would like to appliqué on top of the stabilizer and smooth in place. Attach the hoop to the machine.

The appliqué design may be mirror imaged or rotated for desired effect. The machine will stitch a placement line for the appliqué piece. Lay a piece of fabric over the stitched area. *Note: I like to repeat the placement stitching at this time. If you choose to do that you will trim away the excess fabric after stitching the placement line a second time.*

The next step will be the tack down stitch. You may trim after the tack down stitch if you did not do so before.



The decorative stitch will sew next and the last stitch of the appliqué will be the satin stitch.

Repeat these steps for the other two elements in the design.

**Quilting Designs**

When the appliqué is finished, layer the backing, batting and top. Pin-baste the layers together with the small brass safety pins.

With the embroidery module still attached to the machine select the quilting motif you would like to use on the quilt. Hoop the three layers together in the large oval hoop. You will not need a stabilizer for most quilting motifs. Thread the bobbin and needle with the same thread. Stitch the motif, trim threads and move hoop to the next area.



**Finishing**

When all motifs have been quilted, free-motion quilt the area between them using the BERNINA® Stitch Regulator.

Trim the edges of the quilt even and attach binding using your favorite binding method. *Note: For additional information on binding, go to [www.bernausa.com](http://www.bernausa.com) > Online Classes > Sewing Classes > Binding Basics.*