



Let's Line Up!

Created by Jill Braley

Lesson Machine:

Any BERNINA® machine model

Note: Stitch numbers listed specifically refer to *artista* models

Lesson Objective:

To learn to align and match stitches to create stitch combinations

Lesson Activities:

- Storing selected stitches
- Test and alter stitches by adjusting stitch settings and using several functions

Lesson Supplies:

- 8" squares of med. weight fabrics
- Decorative threads in a variety of different weights
- A variety of needle types and sizes
- 8" squares of OESD Tear-away stabilizer
- Clear Foot #34/34C
- BERNINA® Magnifying Lens

Lesson Outcome:

- Start a reference notebook of decorative stitch combinations and thread choices.

To Begin—

Go to the *Stitch Recipe Exchange* area of the website. Follow this pathway: www.berninausa.com > See It! / Share It! > Stitch Recipe Exchange. Print the *Stacked Scallops* recipe to use with this lesson.

Machine Setup—

- Clean and oil your machine—It will sew so much better for you when you do!
- Insert a new needle
 - The size and type of needle is determined by the type of thread, the weight of the thread, and the fiber content of the fabric. **Don't forget to change the needle more frequently.** A dull, damaged or burred needle will make working with specialty threads much more of a challenge!
- Attach Clear Foot #34/34C
- Attach the Slide-On sewing table (if available) to give the proper support to the fabric as it travels under the presser foot. Another option would be to set your machine in a cabinet and/or use a clear Lucite table such as the Sew Steady tables. These are available in a range of styles and sizes.
- Attach the Magnifying Lens

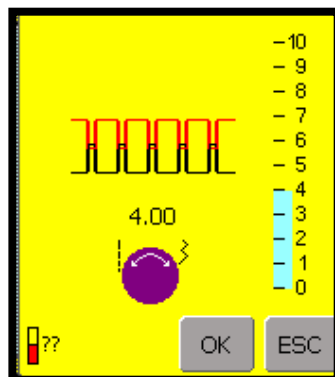
Helpful Hints—

- Pattern Begin, Pattern End, Pattern Repeat 1-9X, and Mirror Image Right-Left are the "must use" functions for this lesson, if these are available on your particular machine model. Refer to your owners manual to locate these functions on your machine.
- SLOW DOWN!** Begin with your machine set at 1/2 speed if you have a tendency to sew with "the pedal to the metal". Remember accuracy, not speed, is your goal. Sewing at a consistent speed will yield the best results.
- When working with "stacked" stitch combinations, always begin with the center rows of stitches. Each additional row will be sewn to the left and right of center.
- The BERNINA® Magnifying Lens and Free hand System (FHS) will simplify and add accuracy to the needle placement process.



BERNINA

Let's Line Up!



Decorative Threads

When working with the variety of different decorative threads you will probably find that you need to reduce the needle thread tension. This means going to a lower number on the tension screen. Another way in which to achieve this effect is to use a 50wt / 3-ply cotton thread such as Mettler Silk-Finish in the bobbin. This is a “construction quality” thread and therefore, is thicker. A heavier thread in the bobbin “mimics” the look of loosening the top tension and will help to make the surface stitching look much nicer. This technique is especially effective on traditional rotary hook machines such as the *artista* series (*artista* 180, 185, 640, 200/730) or the 1630. For the “CB” hook system machines (those machines with 5.5mm or less stitch width), simply use a bobbin weight thread (60wt / 2-ply) and thread the finger of the bobbin case to “mimic” the reduction of the top tension.

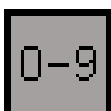
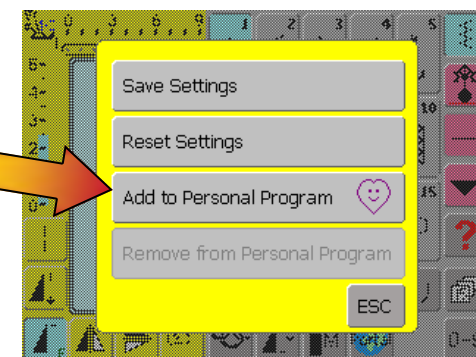
After sewing this exercise, choose different decorative threads and repeat the same stitch combination. Be sure to mark each sample with thread brand, fiber, weight and the needle type and size information.

Selecting Stitches

If you are creating Stitch Recipes using an *artista* model, use the Stitch Selection by Number (0-9) function, select and store stitches for the stitch combination to your Personal Program.

Simply touch the Stitch Altering Area of the screen where the stitch is displayed; select the Add to Personal Program option.

After gathering all of your stitches, access Personal Program and simply touch one of the stored stitches to begin your Stitch Recipe.



Stitch Selection by Number



Personal Program

Let's Line Up!

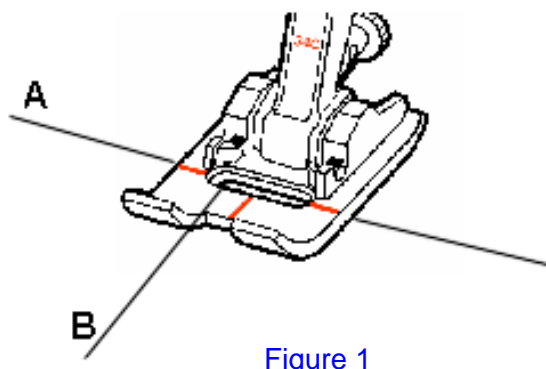
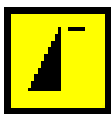


Figure 1



Pattern Begin



Mirror Image Right-Left



Figure 2

Accurate Marking and Guiding

Jill's Tip: Accurate guiding and constant **consistent** stitching speed are **THE** two most important contributing factors to successful decorative sewing and creating stitch recipes!

- ☑ Use a fine marking pencil or pen to draw a horizontal line ~1" from the top of the fabric; this is Line A. All stitching except Rows 3 and 4 will begin on this line.
- ☑ Draw a line down the center of the fabric, perpendicular to Line A; this is Line B. All rows of stitches will be sewn to the right and left of Line B.

Row 1 - Taking the First Stitch



- ☑ Select the scallop stitch. Position the fabric so the red lines on each side of the foot are on Line A and Line B is directly under the needle (see Figure 1).
- ☑ Use the hand wheel to lower the needle. If it does not penetrate Line A and Line B, reposition the fabric until the needle point is directly on Lines A and B. Clear Foot #34/34C enables you to see these lines easily.

Jill's Tip: Using the Free Hand System (FHS) to lift the presser foot leaves your hands free to position the fabric.

- ☑ Sew the first row of stitching.

Row 2

- ☑ Touch Pattern Begin; Engage Mirror Image Right-Left; and touch the Pattern End function **or** button on the head frame (see Figure 2).
- ☑ Engage Needle Stop Down.

Let's Line Up!

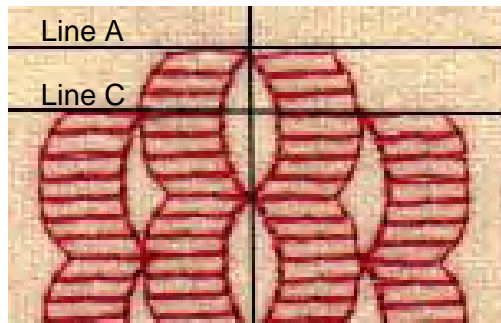


Figure 3

Row 2 (cont'd)

- ☑ Reposition the fabric for Row 2. Line the needle up with Line A and the first stitch of the previous row of stitching. Use the hand wheel to lower the needle. Use the FHS to lift the foot as you reposition the fabric.
- ☑ Sew in a controlled manner, watching your needle move from right to left as it forms the scallop. The last stitch of the scallop should enter the same needle hole as the last stitch of the scallop on the previous row.

Jill's Tip: Should you find yourself with the first scallop not quite lined up the way that you would like, do the following—Stop sewing; tap the back of your foot control with your heel or use your Needle Stop Up button to raise the needle; use your FHS and lift the presser foot slightly; re-adjust your fabric to the proper position (“scootch” it into place); sink your needle back into the fabric. **BEFORE** continuing to sew, touch Pattern Begin.

- ☑ Sew a second and third pattern repeat. Are the points on the scallops lining up and touching? As stated earlier, consistent sewing speed and correct guiding of the fabric are the keys to success.

Rows 3 & 4

- ☑ Rows 3 and 4 begin at the middle point of the first scallops in Rows 1 and 2. Locate the center stitches of the first scallops and draw a line parallel to Line A. This will be Line C. The first stitch for Rows 3 and 4 will begin on Line C. (see Figure 3).
- ☑ Touch Pattern Begin. Position the needle on Line C so that the first stitch will be sewn in the needle hole from Row 1 (see Figure 4). Sew Row 3.
- ☑ Disengage Mirror Image Right-Left, touch Pattern Begin, and position the needle for Row 4. Sew Row 4.

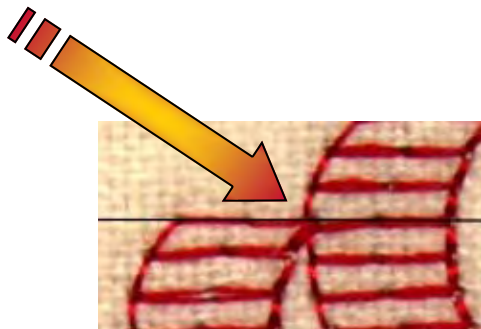


Figure 4

BERNINA⁺

Classroom
Courses

Lessons from
www.berninausa.com

BERNINA⁺

Let's Line Up!

147



7 5 3 1 2 4 6 8

427



Rows 5 & 6

- ☑ The rose stitch is sewn with the edge of the presser foot against the edge of the scallop. Touch Pattern Begin before positioning the needle on Line A.
- ☑ Engage Mirror Image Right-Left to sew Row 6.

Rows 7 & 8

- ☑ The spiked satin stitch begins on Line A.
- ☑ The outside edge of the presser foot is positioned and guided along the center of the roses on Rows 5 and 6.
- ☑ Engage Mirror Image Right-Left to sew Row 8

*Additional Stitch Combinations can be found in the **Stitch Recipe Exchange** section of this website. Follow these general directions to complete many of them using a variety of decorative threads. Perhaps you might even want to create an inspiration "Cook" book for your Stitch Recipes!*