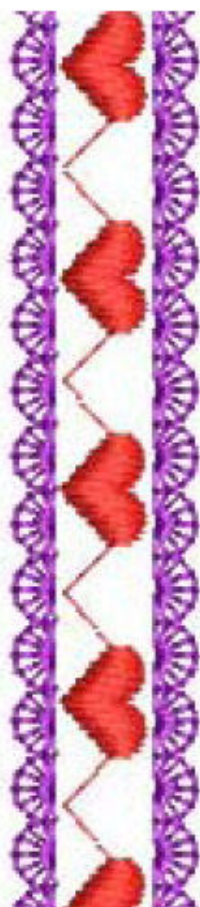


BERNINA⁺

Laced Hearts

Created by Faith Reynolds

A row of hearts framed by a scalloped lace stitch makes a perfect embellishment for lingerie and heirloom garments.



1 2 3

**Note: If using this recipe as a continuous border, use the longest axis of the hoop to minimize the number of hoopings needed.*

- Open the BERNINA[®] Embroidery Software.
- Select the Design Tab.
- Make sure the grid and the large embroidery hoop* are showing on your computer screen. If either are not showing, click on the Grid and/or Hoop icons on the tool bar at the top of the screen.
- Select Pattern Run Outline Stitch from the bar at the bottom of the screen.
- Click on the Object Properties icon on the top tool bar; select Outline Stitch Tab from the dialog box.
- Select a stitch by choosing Select, then click on the Symbol Set and select the NP004a folder.
- Scroll down and click on stitch #K0015a; confirm by clicking on Make Current. Click OK.
- To place this stitch on the screen, select the Open Curve tool and left mouse click one time to start the line on the top of the screen (inside the hoop). Left mouse click one time at the bottom of the screen (inside the hoop) to end the line of stitches. Touch the Enter key on the keyboard to confirm.

Complete the rest of the design in the same manner, creating parallel lines of decorative stitches within the stitching area of the embroidery hoop. Follow the directions below to complete the design:

- Line 1 (already done): NP004a folder > stitch #K0018a
- Line 2: Home Dec folder > stitch #413.
- Line 3: Select Line 1. Copy and paste; with the duplicates selected, engage Mirror Image Horizontal. Use the right arrow key on the keyboard to move the mirror-imaged line to the right of Line 2.