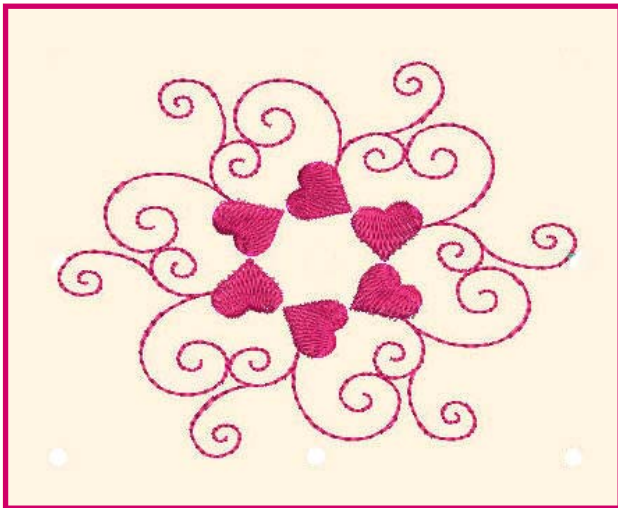


Explorations Software Layout Wheel & Cookie Cutters Line Quilt Designs

Created by Bunny Gates

Heart Quilt Design



Create unique Line Quilt Designs with Explorations Software. The Layout Wheel and Cookie Cutter Tools allow you to design with ease! Enhance your quilting projects with charming designs like the *Heart Quilt Design*.

Software Recommendations

Explorations Galaxy or Classic

Visit www.embroideryonline.com

Your one-stop shop for embroidery designs
and innovative embroidery accessories

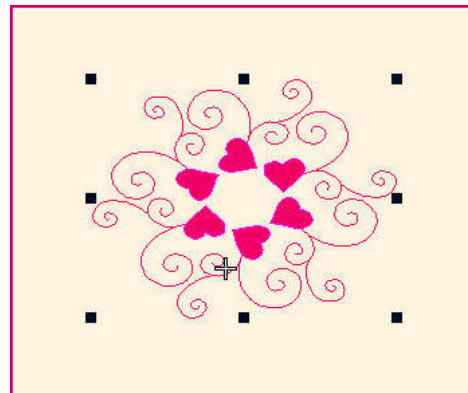


For additional projects and information...

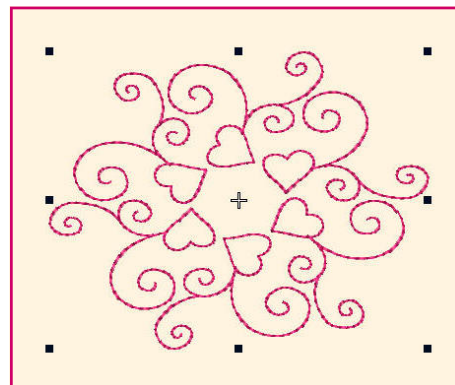
Visit www.berninausa.com

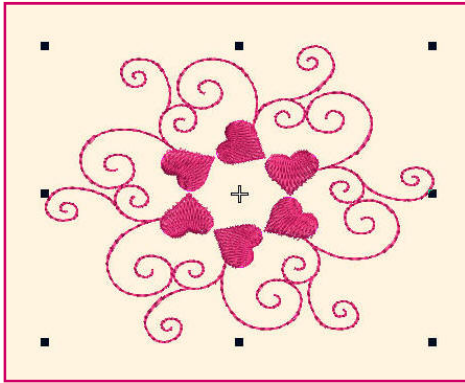
A Lesson in Line Quilt Designs

1. Open a Project.
 - Click on New.
 - Name your project "Heart Quilt Design."
2. Work with Cookie Cutters.
 - Go to Cookie Cutters mode.
 - Open Hearts folder.
 - Text button should be on (light blue).
 - Drag and drop heart 6 onto the workspace.
 - Click on Zoom. Zoom out 2X.



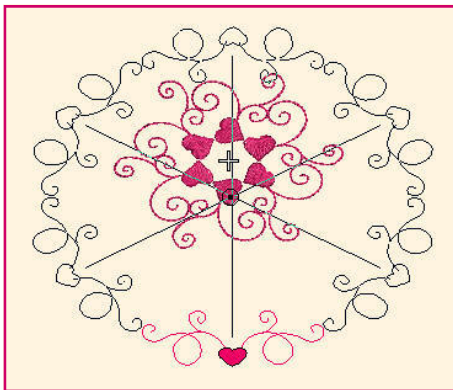
3. Create the center of our quilt design.
 - Click on Tools, Layout Wheel.
 - Click on Wreath with 6 Wreath Points.
 - Click on OK.
 - Move hearts around until they are in the center of the design.
 - Left click to form wreath.
 - Click on Group, Group.





4. Create Stitches.

- Click on Stitches n Effects mode.
- Click on Triple Run Outlines .
- Click on Tatami Fills.
- Click on Save.



5. Create the outside circle.

- Click on Zoom, Zoom out 2X.
- Click on Cookie Cutters mode.
- Drag and drop heart 7 onto the workspace.
- Move it at the bottom of the inner circle.
- Click on Layout Wheel with 6 Wreath Points.
- Move hearts around until the sides come close together to form a circle.
- Left click to form outer wreath.
- Click on Group, Group.

6. Create Stitches.

- Follow directions under Step 4 - Create Stitches.

7. Line up circles.

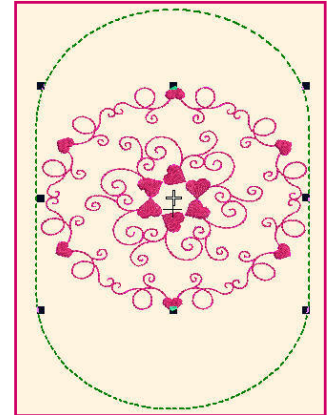
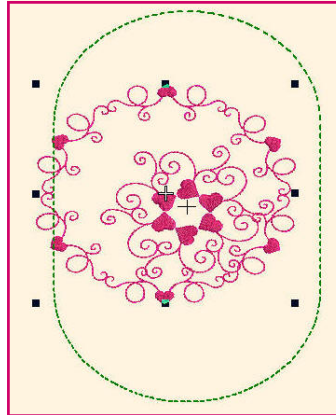
- Click on Edit, Select All.
- Click on Align, Center.

8. Select your hoop.

- Click on View, Show Hoops.
- Click on Hoops mode.
- Click on the hoop for your machine.

⇒ If your design is *green*, it's fits in the hoop and you are ready to stitch it out.

⇒ Follow the steps below if any part of your design is *black*.

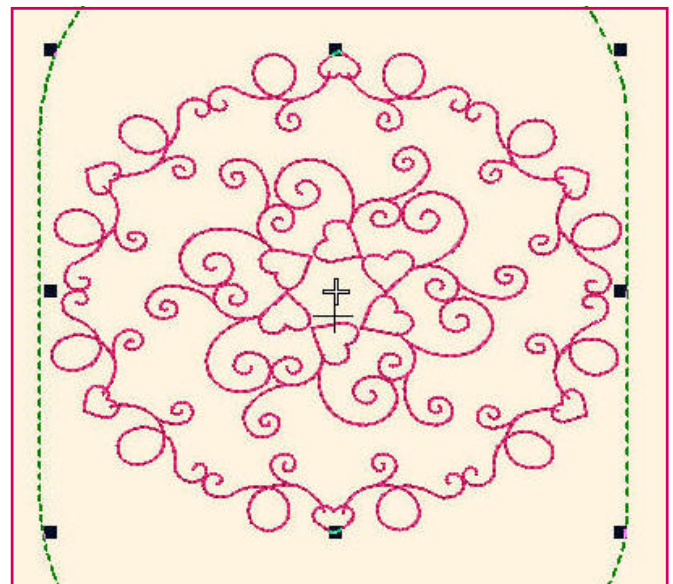


9. Resize the outer circle.

- Click on the outer circle until you see the solid black sizing handles.
- Using one of the corner sizing handles make the outer circle small enough to fit into the hoop.

10. Finish your design.

- To align the circles again, follow the directions under Step 7.
- Click on Group, Group.
- Click on Save.



You can also do this design with all Triple Run Outlines for a different look.

Now that you know the basics, take the time to play with creating different designs!