

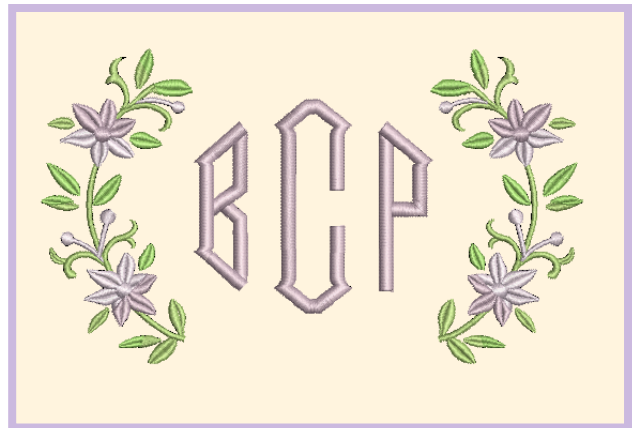
Explorations Software Lesson Lettering Basics

By Paula Harmon

A simple gift becomes a memorable gift with the addition of lettering. Simple lettering becomes extraordinary lettering with the assistance of *Explorations Software*!

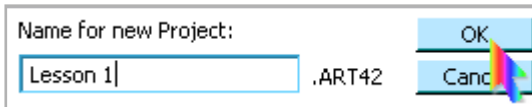
Supplies

- Explorations Software - Classic or Galaxy



Lettering Basics - Monogram Lesson

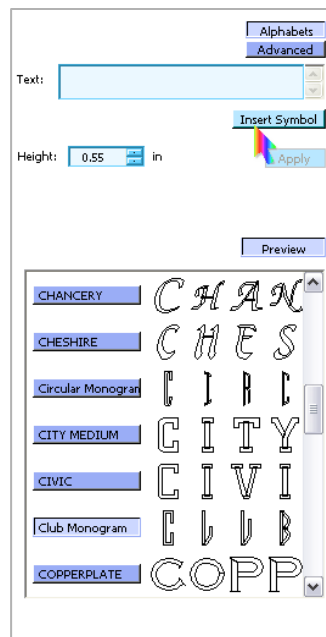
- Create a New Project in Explorations and name it Monogram Lesson 1 and click OK.



- Select the Lettering Mode

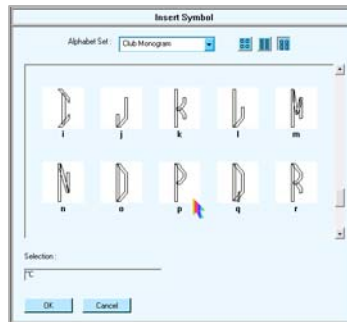
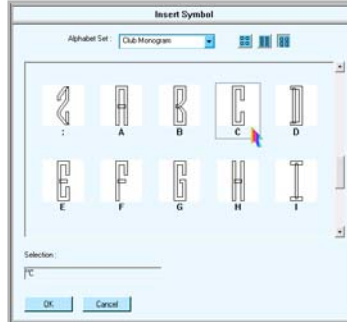
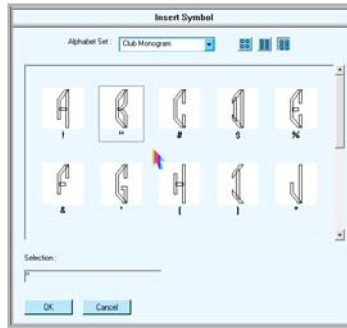


- Click the Preview Button to preview the fonts.
- Select the Club Monogram.
- Click on Insert Symbol.

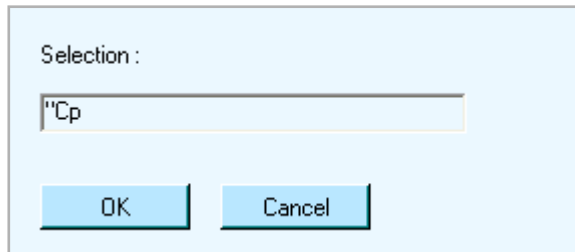




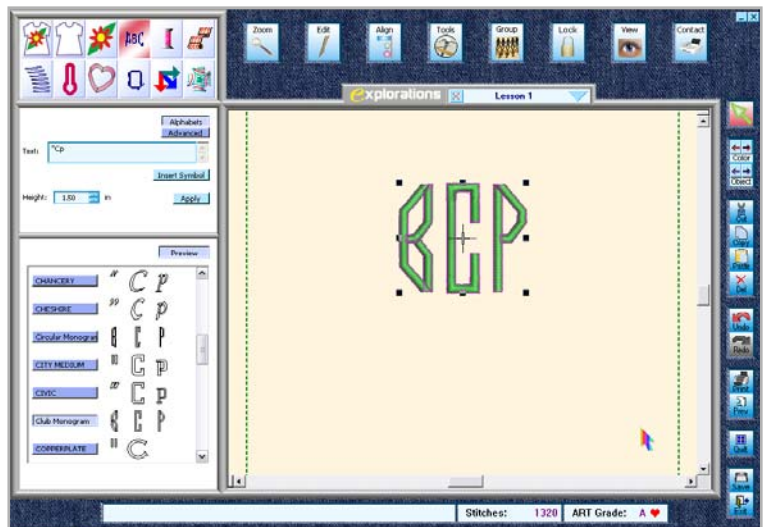
- Select the three initials used for this monogram lesson (or the letters of your choice). The first is the “B” then scroll down to locate the “C” that will form the middle letter of the monogram. Next, scroll down to find the “P” that finishes the monogram.



- Because the letters for this monogram require a slant on each side, notice that the Select Box below the letters reads “Cp. This type of lettering could not be achieved using the keyboard. Click OK once the three letters are selected.



- Set the Height of the letters to 1.5 inches and click Apply.

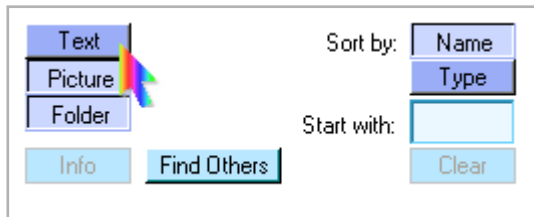




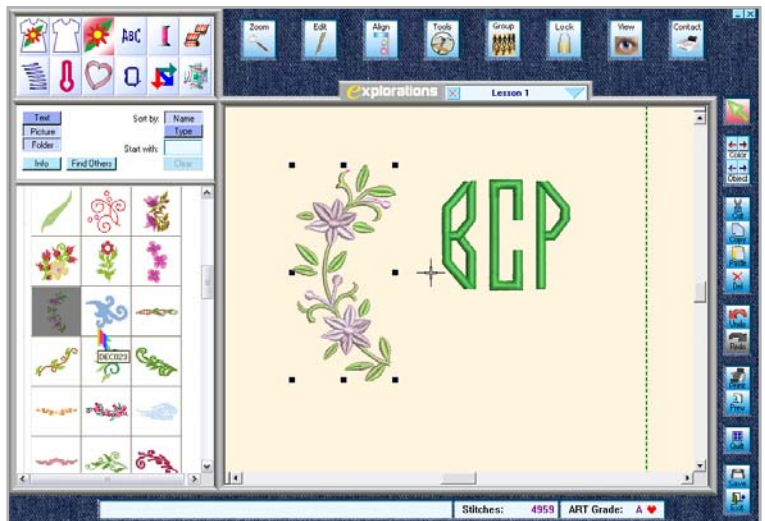
- Select the Designs Mode.
- Locate and Open the design folder called “Decorative Pieces – Monogram Accents” by clicking on the “+” sign next to the folder.



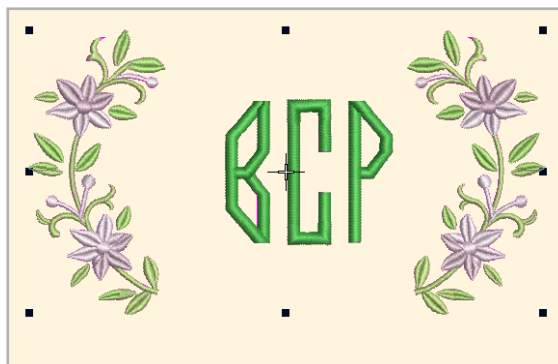
- Click on the Text Button located between the Modes area and where the design folders can be seen.



- Locate Design DEC022. Click and drag this design onto the work space.
- With the design still selected Click Edit and Duplicate. Then Click Edit and Mirror Horizontal. Move the second copy of the design to the right side of the Monogram.



- Click Edit and Select All. Click Align and Align Vertical Centers. The design should look similar to the picture at right.
- Next, click Align and Space Horizontal. Voila! The monogram is beautifully aligned.



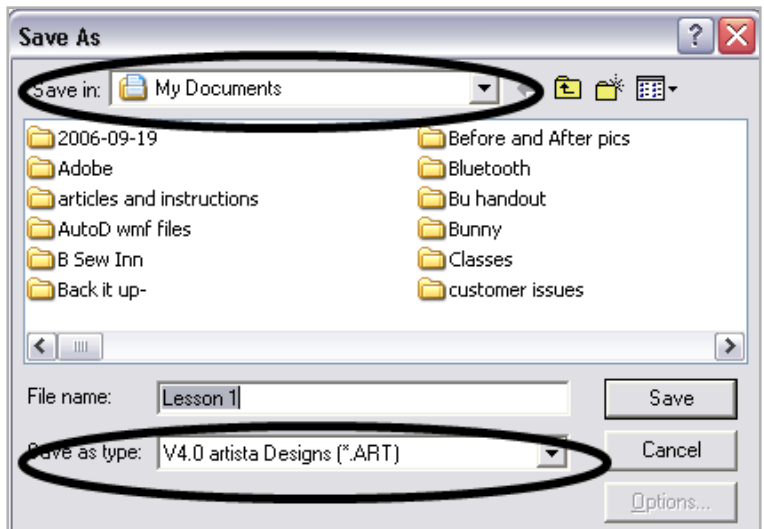
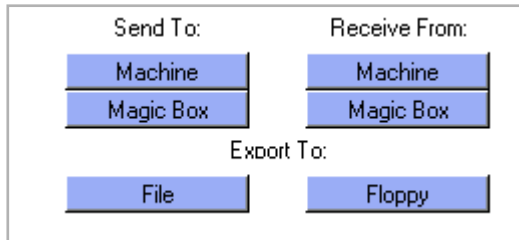
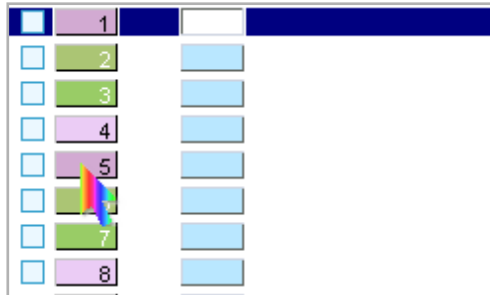
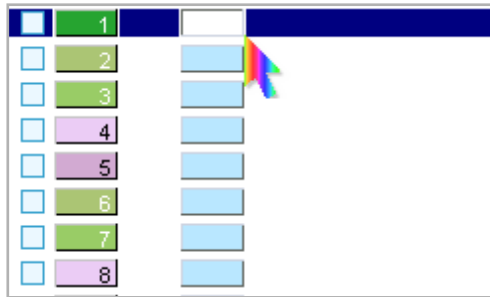


- Click on the Threads Mode.
- Click on the blue Select Box located next to color number 1.
- Click on the Color Chip of color #5 to change the color of the lettering to match the design.
- Click Save to save your work.



- Select the Connect Mode.
- Each machine brand/model is different in how to send designs from Explorations to the machine. The three choices are:
 - ⇒ Send directly to or read from any Bernina Artista Machine.
 - ⇒ Send directly to or read from any Magic Box.
 - ⇒ Export to File is used for writing to any drive on the computer – the computers hard drive, a memory stick or Personal design card/ATA PC card.

- Click Export to File. The box, at right, will appear.
- Use the drop down arrow next to Save In to tell the computer where to save the design
- Save as Type is used to save in the correct language for different machines. The default is ART version 4. Use the drop down arrow to select a different language.
- Click Save.

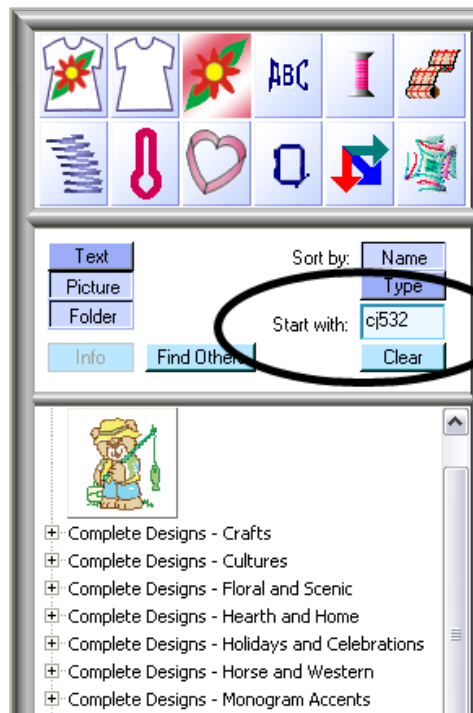


Lettering Basics - Baseline Lesson

- Create a new project and name it Gone Fishin'.



- Open the Designs Mode.
- Open the Folder named "Complete Designs – Children."
- Type in the "Start with" box – CJ532.
- Click and drag the design onto your workspace.



- Select the Lettering Mode.
- Type in the Text box – "Gone Fishin." Set the height to .75 Inches or 18mm. Click Apply
- Click on different fonts to see which one complements the design. For this lesson, use Brody.
- Drag the lettering above the bear.



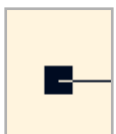
- Click on the Advanced button.
- Select the 4th Baseline – the any shape baseline.
- Click Edit and Reshape. You will see several different symbols with your lettering now.:



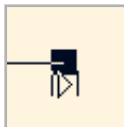
The diamond shows where the embroidery will start.



The plus sign shows where the embroidery will end.



There will be a solid box at the beginning and ending of the baseline. This can be used to change the angle of the text. Simply click and drag the end point up or down to change the angle.



The “|>|” can be used to stretch text along a baseline.



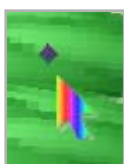
The solid triangle at the top of the lettering provides the option of making the lettering taller.



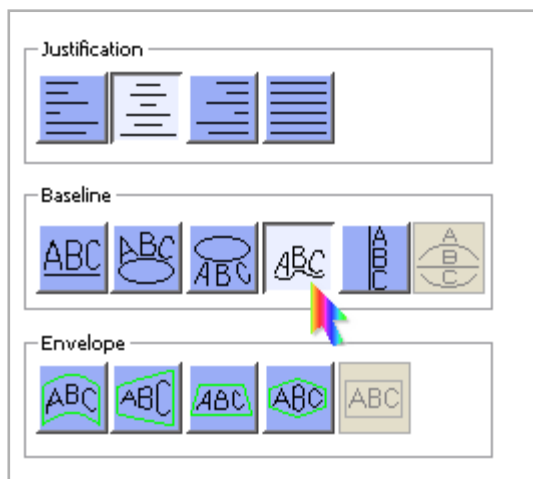
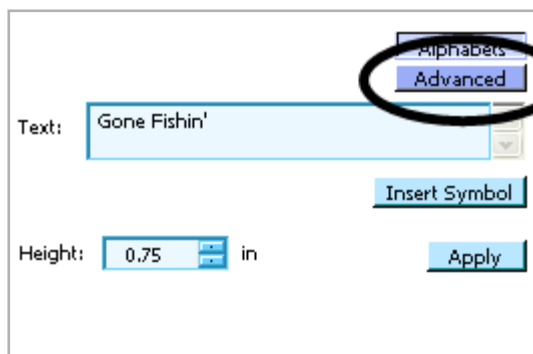
The solid triangle at the top, right hand side of the lettering, provides the option to stretch the lettering to maximize the baseline and make the lettering taller in one movement.



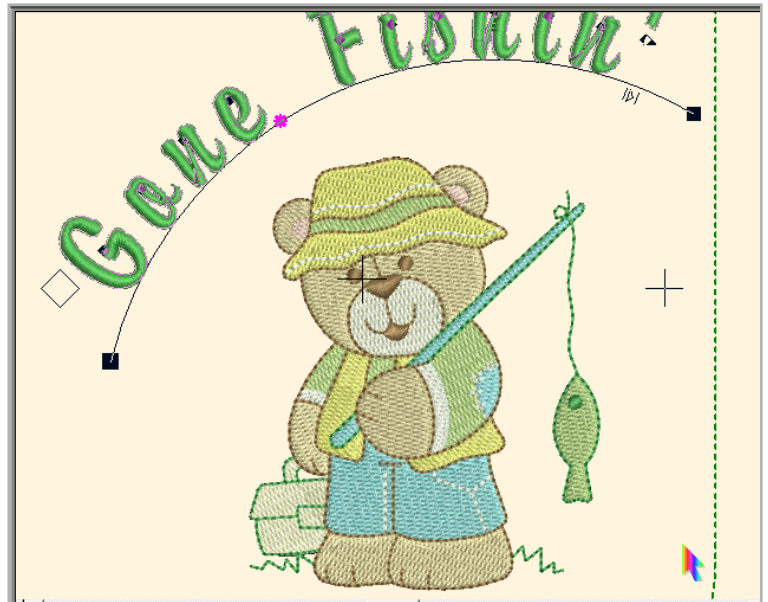
The solid triangle at the end of the word on the right hand side provides the option to move the lettering equal both to the left and right.



Each letter will have a Kerning handle. This handle is used to move a letter independently along the baseline. It is most often used to close the gap between letters in script style letters or as used in the next steps.



- Click and drag the solid square on the left hand side of the baseline to be about equal with the bear's shoulder .
- RIGHT click on the baseline half way between the two words. This should place a circle on the baseline. Right clicks create a circle (curves) and left clicks create a square or sharp point. Left click on the circle just created and drag it above the bears head.
- *Note: You can also move the point to the left or right which will change how the lettering looks.*



- If the lettering is bunched together, as sampled left, in one area, click on the Kerning handle and slide the letters into a better position along the baseline.
- Save the design.



For additional projects and information...

Visit www.berninausa.com



Visit www.embroideryonline.com

For additional information on innovative embroidery software