



Featuring techniques from Explorations Classic or Explorations Galaxy

In this lesson, learn to:

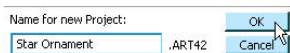
- Use a Cookie Cutter as a “template”
- Use designs from the Decorative Pieces folder to add detail to a project
- Combine color changes with the Stitch Sequence Tool
- Use the Remove Overlaps Tool to remove excess stitches from overlapping designs

STEP 1: Create a New Project

- Open the Explorations Software Program.
- While in the Project mode (software defaults to this mode when first opened), select or create a folder to save the lesson in.
 - *Note: Creating different folders for your projects will help you organize your projects so that you will be able to access them much easier. Consult the OnScreen Manual (found under the Contact button on the General Menu tab) for information on how to do this.*



- Click on New Icon.
- Type “Star Ornament” in the Name for New Project dialogue box and click OK.



STEP 2: Create the Star Outline



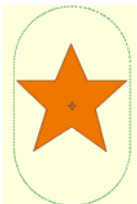
- Click on the Hoops Mode.
- Select the hoop for your machine. (Sample uses the artista 255 x 145 Oval Hoop.)
- Click View. Check next to Show Hoops (if not already checked).



- Select Zoom > Zoom to Hoops.



- Click on the Cookie Cutters Mode.
- Click the + sign next to the Utility Shapes Folder.
- Click and drag the Star Cookie Cutter onto the Workspace.



- Click and drag on one of the outside corner sizing handles (the dark squares) to enlarge it as big as it will go while still fitting within the hoop.



- With the star selected, click on the Stitches Mode Icon.
- Click the Single Run button in the Outlines Chooser Field.
- Click on the empty space on the Workspace to deselect the star.



STEP 3: Add Snowflakes



- Click on the Designs Mode.
- Click the + sign next to the Decorative Pieces-Holidays folder to open it.



- Click the Text Button in the Toolbox.
- Click and drag PA 191 onto the Workspace, placing it within the upper left point of the star.



- With the snowflake selected, click the Copy button on the right hand General Tools bar.



- Click the Paste button on the right hand General Tools bar. Drag the pasted snowflake to a position within the upper right point of the star.

- Click the Paste button again and drag this pasted snowflake to another point on the star. Continue until there is a snowflake in each point of the star.
 - *Note: If you have Explorations Galaxy (or Explorations Classic with the Layout Wheel option), you can use the Wreath feature of the software to make this step even easier. Consult the OnScreen Manual for details on how to use this feature.*



- Click and drag PA 156 onto the workspace.



- Click Copy, then Paste. Move the pasted snowflake to another position within the center of the star. Continue until there are a total of 4 snowflakes in the center of the star.

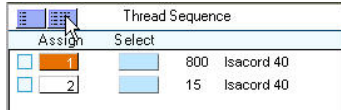


- Click the Save button on the right General Tools menu.
 - *Note: It is a good idea to click the Save button periodically when working on any design “just in case”!*

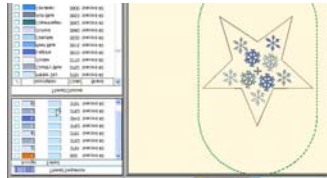
STEP 4: Change the color of the snowflakes



- Click on the Threads Mode.
- Click on the Detailed View button in the Thread Sequence box to view the color chips along with the thread numbers.
- Scroll to the blue colors in the Thread Chooser field (the 3000's). Select a snowflake, and then select a blue color.
- Select another snowflake, then another color of blue.
- Select one more snowflake, then a 3rd color of blue.
- Continue changing the snowflake colors, using these three colors of blue.



- Notice the number of thread color changes in the Thread Sequence box even though there are only 3 colors of blue.



- Click Tools > Stitch Sequence.
- Notice the number of blue color changes is now only three shades of blue!

STEP 5: Add a Snowman and Remove Overlaps



- Click on the Designs Mode.
- Close any open folders by clicking on the (-) sign next to them.
- Open the Complete Designs – Holidays and Celebrations folder by clicking the (+) sign next to the name.
- Click and drag HD304 (snowman face) onto the star.



- Click and drag one of the corner sizing handles (the dark squares) to reduce the size of the snowman to approximately 55% of its original size (approximately 1.97 x 2.06 inches).



- Position the snowman as desired in the center of the star.



- With the snowman selected, click Tools > Remove Overlaps.

STEP 6: Create the Stitching / Seam Line

- Select the star outline.
 - *Note: It is sometimes helpful to turn off True View in order to see exactly what is selected on screen. Anything selected will be pink. (Click View on the General Menus bar. If there is a check mark next to True View, then True View is "on" or active. If there is not a check mark next to True View, then it is "off" or inactive.)*



- Click Copy > Paste.



- *Note: This adds another straight stitch star outline which will be used as the stitching line for the back of the star ornament.*



- Save the project by clicking the Save button on the General Tools bar.
- Send the design to your machine.
 - *Note: Consult the OnScreen Manual for details on sending designs to your specific machine or USB stick for your machine.*

STEP 7: Embroider the Design and Create the Ornament

- Hoop fabric and stabilizer together and attach hoop to the machine.
- Stitch the design until the last color change.
- Place a piece of fabric right side down over the stitching in the hoop and stitch the last color (the star outline).

- Remove the hoop from the machine and trim the star a very scant 1/4" from each side of the star. Trim corners at each point.



- Cut a slit in the backing fabric and turn the star right side out.
- Stuff with polyester stuffing and whip stitch the opening closed.



- Add ribbons, raffia, and EZ Glitz Pearls as desired.

Visit www.berninausa.com for additional projects!