

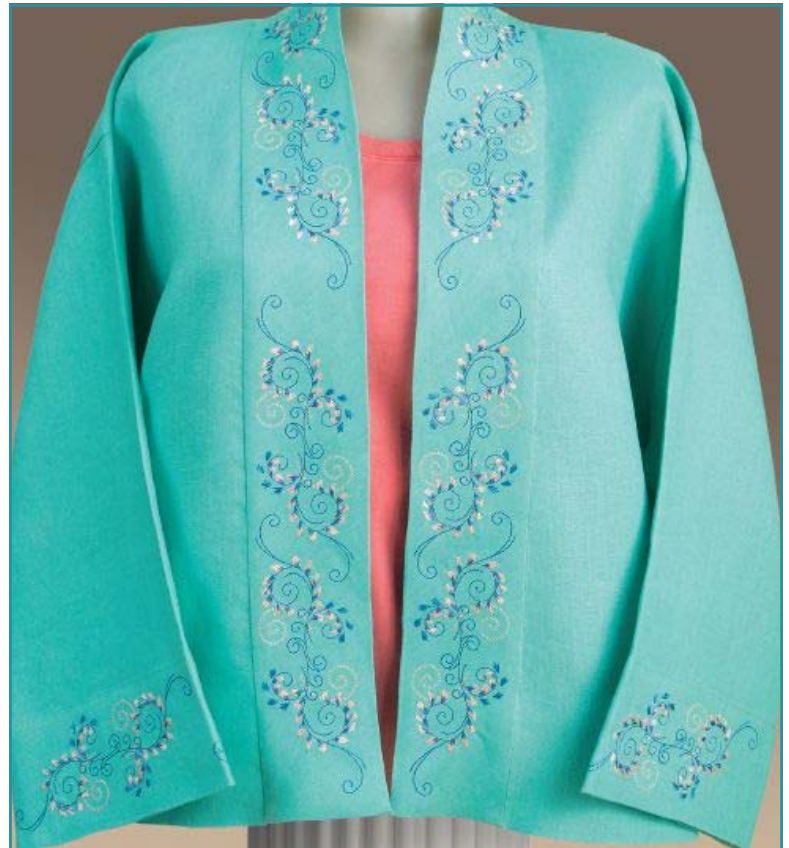
Embroidery Project

Embroidered Jacket Featuring The Best of Fashion

Created by Elaine Cibelli

Make it your own with the **OESD Premier Embroidery Collection - Best of Fashion**; 60 timeless embroidery designs to personalize your wardrobe or home fashion. Jackets or jeans, skirts or shirts, tees or totes, table runners or tie-backs, contemporary or classic, sassy or sweet, this specially selected collection of designs will add the perfect touch to your fashion statement.

Follow our tips and tricks to embroidery our signature jacket featuring the *Ikina Jacket Pattern* and *Caribbean Linen* from **Project Sewing Workshop**.



Supplies

Embroidery Designs

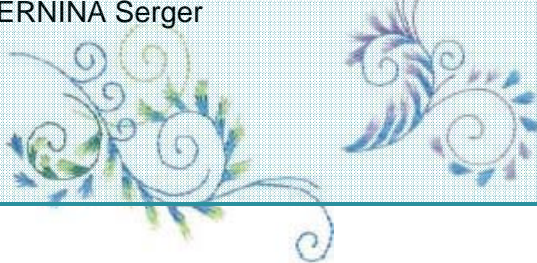
- OESD Premier Embroidery Collection - *Best of Fashion*

Machine & Accessories

- BERNINA Sewing & Embroidery System
- Mega hoop or Magna-Quilts and Borders
- BERNINA DesignerPlus Software
- BERNINA Serger

Fabric & Notions

- Ikina Jacket Pattern from Project Sewing Workshop
- Caribbean Linen from Project Sewing Workshop (fabric yardage according to pattern)
- OESD Stabil Stick stabilizer
- Mega hoop or Magna-Quilts and Borders
- 505 Temporary Spray Adhesive
- Isacord Threads in colors 1755, 3332 and 3620
- Nifty Notions Cut for the Cure Ruler 7" x 24"
- Embroidery Wand
- Slim Chaco Liner White
- General sewing supplies for garment construction
- Desk Needle Threader



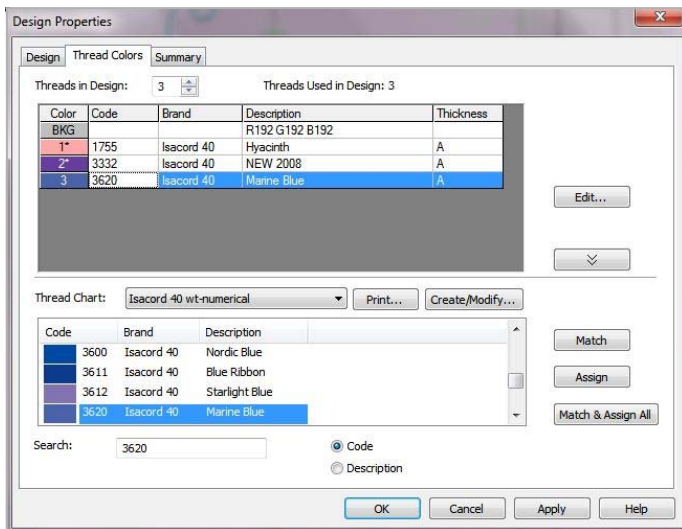
DesignerPlus Embroidery Software

BERNINA DesignerPlus Embroidery Software allows you to transform a single embroidery motif into an elegant, custom-colored border design.

Changing Thread Colors

- From the Best of Fashion Embroidery Collection, select embroidery motif NB 646-48 and open in the BERNINA Embroidery DesignerPlus Software.

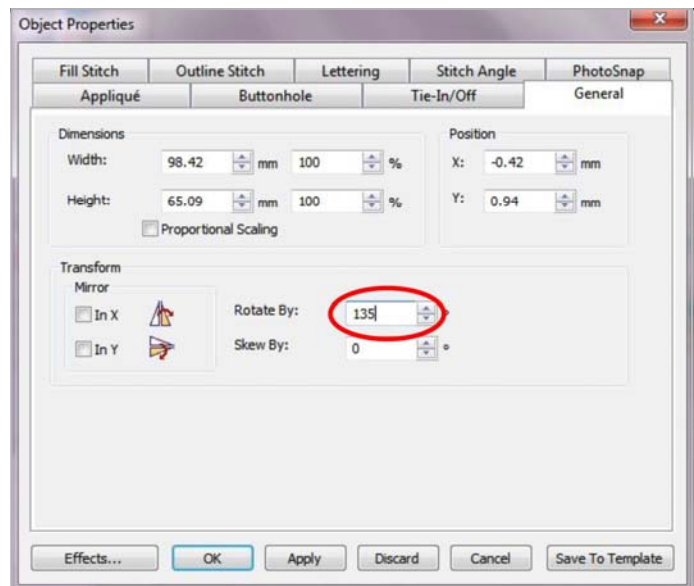
- Embroidery motif thread colors can be customized to complement your fabric selection. Directions are given here to complement Caribbean Linen from Project Sewing Workshop.



- Change the thread colors by going to Settings > Thread Colors > select the Isacord numerical Chart. Assign > Isacord 1755 to color 1, 3332 to color 2, and 3620 to color 3. Click OK.

Combining Embroidery Motifs

- With the design selected, open Object Properties > General Tab > in the Rotate box type in 135° and click OK.



- While the design is still selected > Copy > Paste > Right click on the design to open Object Properties > General Tab > in the Rotate box type in 180° and click OK.



- Using the arrows on the computer keyboard, move the design copy into place so that it looks like the pictured design combination for Quirky Swirls. SAVE AS: Quirky Swirls combined.

- Change hoop size to Artista 400 x 150 Mega – Auto Split Machines. Select All (CTRL A) > copy > paste > and move the design copy into place referring to the picture of Quirky Swirls Mega.

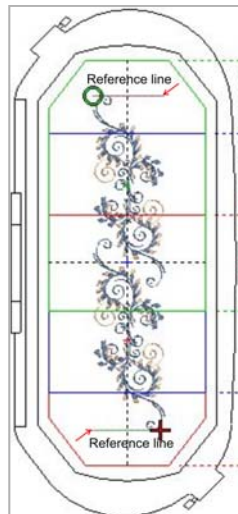
- Re-sequence the thread colors to reduce thread changes while embroidering: Select All > click on the Color film tab.



- Sequence by color > when the sequencing dialog box opens, click OK to reduce color changes.

Visit... www.bernausa.com for additional BERNINA projects, product information and promotions!

- Create a reference line to help with aligning as the design is multi-hooped. Open Object properties > Outline Stitch tab > change the stitch length to 6 mm >OK. Select the Open Object tool > hold the CTRL key to digitize a straight line at the top of the combined designs.



- On the Color film options, select:



Sequence to Start.
Copy this line >



Paste > Sequence to End.

- SAVE AS: Quirky Swirls Mega.
- Send the design to the machine using your desired method of transfer.

NOTE: This entire combination process can also be achieved in the BERNINA 830 Embroidery Machine using Endless Embroidery.

Template

- Print multiple copies of the templates: Print Preview > Options tab > click the radio buttons for Whole Design, Hoop, Start /End Crosshairs and Actual Size. Print a paper or transparency film template.



NOTE:

Transparency film is available for both ink jet and laser printers and aids in perfect design placement.



Ikina Jacket Preparation

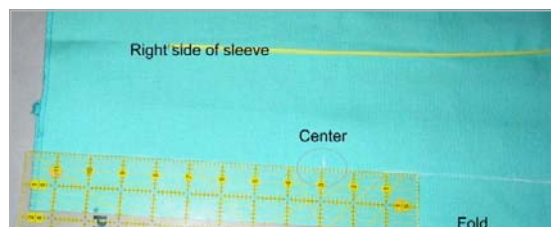
- Following the measurement chart and fabric cutting layout for the Project Sewing Workshop *Ikina Jacket*, cut out the jacket pattern pieces making sure that the collar/band is cut on the bias.
- Use tailor tacks to mark circles and clip notches.



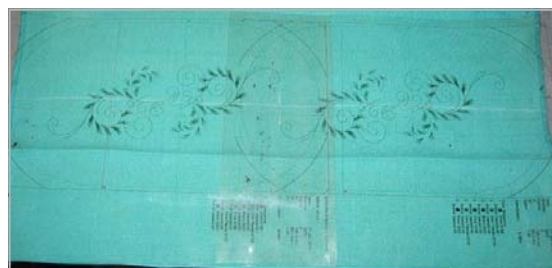
- Prepare the hems on the Fronts and Back and shoulder seams according to the pattern instructions.

Sleeve

- Press the hem allowance for the sleeve and on the *right* side of the hem mark a center border placement line, 1 3/4" from the fold. Also mark the center of the sleeve on the 1 3/4" line. Set aside for embroidery.



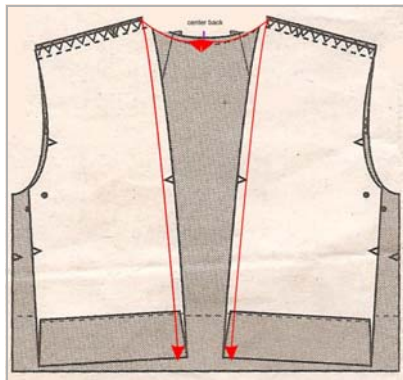
- Preview and mark the design placement by laying the template on the sleeve (above the hem fold) centering the design combination on the sleeve center and the border placement line.



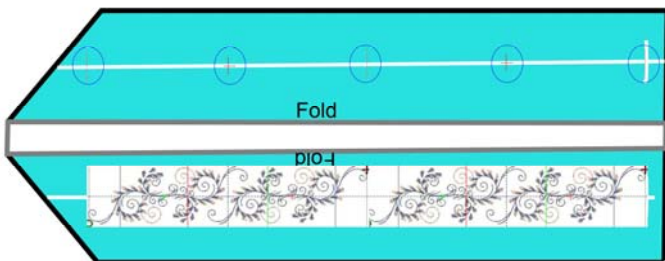
Front Band

- Press the Front Band in half lengthwise, wrong sides together (shaping will take place after embroidery). Mark the center back and a center placement line 1 3/4" from the fold on one long side of the front band using the White Slim Chaco Liner.

- Starting from the center back of jacket body, measure to the hem edges and mark this measurement on the front band beginning at the center back. This will help with design placement.



- Lay out the templates starting 1" from the bottom raw edge of the band, overlapping the design edges at center back to fit the band if necessary. Mark the design center and reference marks on the band for each template.

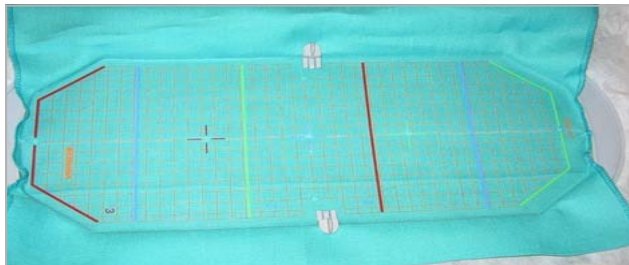


Embroidery the Jacket

- Hoop Stabil Stick Tearaway and use the Embroidery Wand to score and remove the paper backing.



- Place the hoop template on the fabric aligning the template center with the center chalk marks. Transfer the fabric and template onto the Stabil Stick adjusting the centers if necessary. Press into place without stretching or distorting the fabric.



- At the machine, check and adjust the motif position so the center marks align. *On the BERNINA 830 use Absolute Check to achieve perfect alignment.*
- Stitch a basting box around the design.

NOTE: Basting files are available for download on the www.BerninaUSA.com website, can be digitized in the BERNINA Embroidery Software using a 6mm straight stitch or use the built-in basting box on the BERNINA 830.

- Stitch the entire combination design on both sleeve. Repeat the process for the front band beginning at each lower edge on the 1" mark reversing for the opposite side. Re-hoop when necessary, following the same process of aligning center marks, checking that the reference marks line up and securing with the basting box.



Finish the Jacket

- Complete jacket construction according to the pattern instructions, making sure the design on the bottom bands are even on each side. Slipstitch the edge of front facing in place.

TIP: Whenever doing hand sewing make threading the needle easier by using the Desk Needle Threader.

- Enjoy!