

SCALLOP EDGE BASKET LINER

By Bunny Gates and Paula Harmon

Make this simple basket liner using designs from OESD Premier Collection #876 Nature's Serenity by Kathy Hatch. Use the Scallop Stitch File available to Design Connection members to create perfect scallops on the end of the basket liner.



SUPPLY LIST:

- Square basket (approximately 8" square)
- Fabric (or see To Alter the Size of the Basket Liner below)
 - Basket Front: Cut 15" wide x Width of fabric
 - Basket Back: Cut 14" wide x Width of fabric
- OESD Licensed Premier Collection #876 Nature's Serenity by Kathy Hatch.
 - Design #CC87607
 - Design #CC87613
- Scallop Stitch File <http://www.mydesignconnection.com/resources.aspx>
- OESD HeavyWeight Tear-Away Stabilizer
- 101 Quilt Basting Spray
- 606 Spray and Fix Permanent Adhesive Spray
- Isacord Embroidery Thread
- Organ Embroidery Needle Size 75/11 or 80/12
- Sewing Thread that matches your fabric

NOTE: Copy the Scallop Stitch File link <http://www.mydesignconnection.com/resources.aspx> into your Internet Browser Window to download the Scallop Stitch File used for this basket liner. This will create a basket liner that is 8" wide. The sample is 27 1/2" long (the length can be longer depending upon the width of the fabric and your preference). To create a scalloped edge with a different width, see the Using Explorations Software To Create the Scalloped Edge instructions on page 7. You will need the Galaxy Version or the Classic Version with the Reshape Option.

PLACE DESIGNS INSIDE THE SCALLOPED DESIGN:

1. To use Explorations Embroidery Software to place designs inside the scalloped edge:
 - Open a project and give it a name.
 - Use the Filing Assistant to locate the Scallop Design. Click and drag the scallop onto the workspace.
 - Use the Filing Assistant to locate the two designs from Nature's Serenity (or other designs of your choice). Click and drag them onto the workspace. See Explorations

instructions on page 7 for specific placement guidelines.

2. To use your machine's layout features to place designs inside the scalloped edge:
 - Use your machine's edit feature to bring the desired designs by Kathy Hatch onto the machine's screen.
 - Load the scalloped design into your machine following your machine's instructions. (This part needs to stitch as the last color change.
 - Place in a pleasing manner using pictures and instructions below for specific placement if desired.

PREPARE FOR THE EMBROIDERY:

3. Use a fabric marking pen to mark a line 5 1/2" from one short end of the 15" x Width of fabric piece (Basket

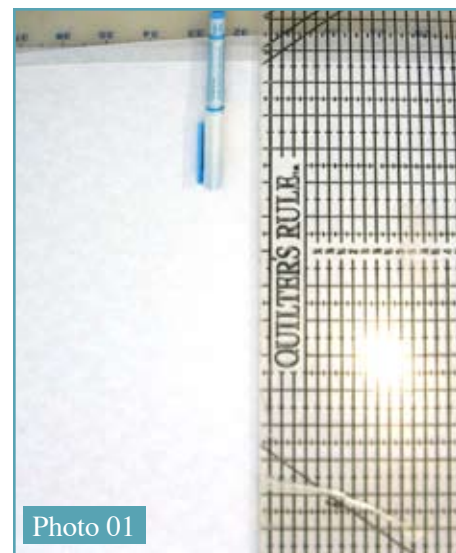


Photo 01

4. Cut a hoop-sized piece of the OESD HeavyWeight Tear-Away stabilizer.
5. Spray the stabilizer with 101 Quilt Basting Spray & apply to the wrong side of your fabric in the area to be embroidered.
6. Hoop the fabric & stabilizer using the hoop's template to align the marked line on the fabric with the vertical horizontal center of your hoop. (See Photo 02) NOTE: The bulk of the fabric should be to the left of the needle.

Continued on next page

7. Stitch the design stopping the machine just before the last color change (the last scallop). (See **Photo 03**)



Photo 02



Photo 03

8. Before stitching the last color change (the scallop), place the 14" x width of fabric piece (Basket Back) over the top of the hooped fabric with right side down. Keep the edge of the lining parallel with the long edges of the embroidered fabric. (The width of the lining will be narrower than the embroidered piece. At this point, just make sure your back piece is parallel to the long cut edges of the hooped Basket Front piece.)
9. Change the needle and bobbin thread to regular sewing thread and stitch the last color change (the scallop). If your embroidery machine bobbin case has an additional thread guide, bypass that guide. (See **Photo 04**)



Photo 04

10. Remove the hoop from the machine and the fabric from the hoop.
11. Carefully remove the excess stabilizer from the back of the fabric.

FINISH THE BASKET LINER:

12. Trim around the scallops & clip the curves. (See **Photo 05**)



Photo 05

13. Mark the side seams:
- Carefully spread the front & back pieces out flat. The long cut edges of the Basket Front and the Basket Back will be parallel, but will not match up.
 - Use the long straight edge of a long ruler to draw a line extending from the straight stitched lines on the sides of the scalloped edge. Align the end of the ruler with the straight short end of the fabric. Mark the side seams keeping the ruler nice & straight. (See **Photo 06**)

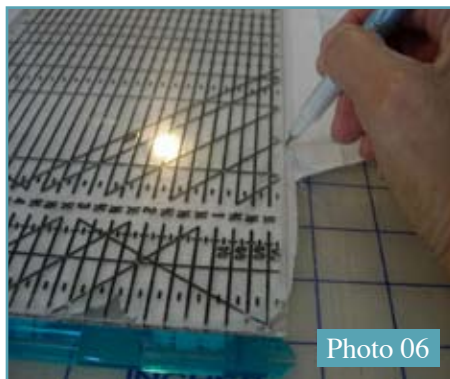


Photo 06

14. Repeat for the other side.
15. Measure 27 1/2" (or desired length) from the scallop edge and draw a line across the fabric to mark the end of the piece.
16. Place pins along the marked lines. (See **Photo 07**)



Photo 07

17. Stitch along the marked lines leaving an opening to turn right side out.
18. Use your ruler to trim away the excess fabric leaving a 1/4" seam allowance. Trim excess stabilizer from back of project.
19. Trim the corners. (See **Photo 08**)



Photo 08

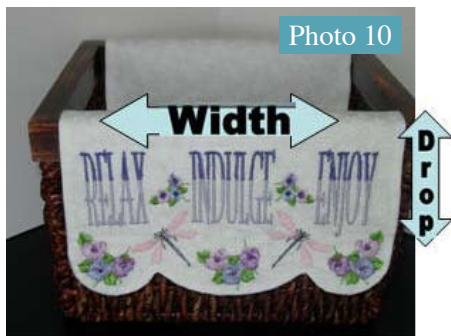
20. Spray the wrong side of the lining piece with 606 Spray and Fix Permanent Adhesive Spray following manufacturer's suggestions.
21. Turn the basket liner right side out.
22. Finger press the seams flat. Use a wooden point presser and your fingers to work with the fabric to get the scallops nice and smooth.
23. Press carefully. The 606 Spray and Fix Spray will permanently fuse the two layers together, so be very careful to have your liner flat before pressing. (See **Photo 09**)



Photo 09

TO ALTER THE SIZE OF THE BASKET LINER:

NOTE: The instructions above create a basket liner that is 8" wide and 27 1/2" long. To create a scallop edge with a different width, see the instructions below. You will need the Galaxy Version or the Classic Version with the Reshape Option of Explorations Software.



To Determine Measurements of Basket Liner: (See Photo 10)

Width of basket (inside edge to opposite inside edge) = (a) _____
 Height of basket (Basket should be at least 6" tall) _____ x 2 = (b) _____
 Basket drop front and back = 13"
 Depth of basket (front to back) + 3 = (c) _____

Finished Measurements:
 b + c + 13" = Length of Liner
 a + 1" = Width of Liner

NOTE: Please allow extra width for hooping of fabric.

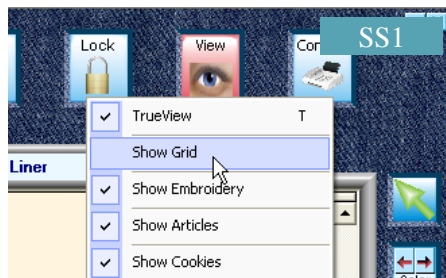
USING EXPLORATIONS SOFTWARE TO CREATE THE SCALLOP EDGE:

The instructions below will explain how to use Explorations Embroidery Software to create the scallop edge that is available at the following link: <http://www.mydesignconnection.com/resources.aspx>. They will also show how to put all of the designs together that were used in the basket liner. If you are using a basket of different proportions, use the chart above to determine the width of the line and alter the width of the scallop accordingly.

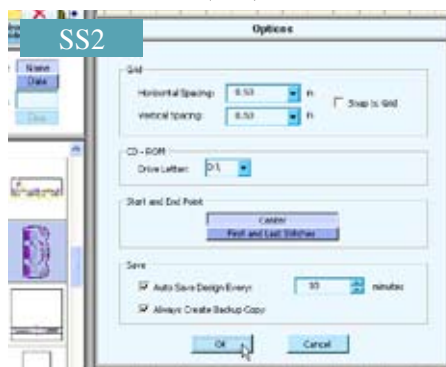
Creating the Scallop Seam Line:

1. Open a project. Name it Basket Liner.

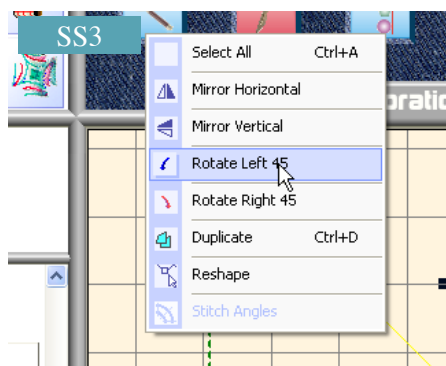
2. Click on View / Show Grid. (SS1)



3. Click Tools > Options.
 • Type .5 in the Horizontal Width box.
 • Type .5 in the Vertical Width box.
 4. Click on OK. (SS2)



5. Open the Cookie Cutter Mode.
 6. Open the Shapes Folder and find the straight line.
 7. Drag and drop the line onto the workspace.
 8. Click on Edit > Rotate Left. Click Edit > Rotate Left again. (SS3)



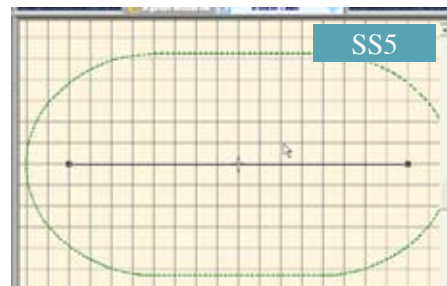
9. To see the line better, click on the **Threads Mode** and click on a dark color.
 10. Open the **Stitches and Effects Mode**.
 11. Click on Straight Run.
 12. Place your cursor on one of the solid black squares on the ends of the straight line.



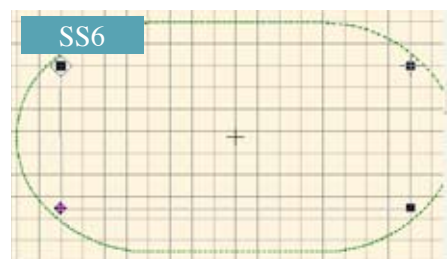
13. Click and drag the square until the box that opens up shows 8.00" on the X axis. (SS4)



14. Open Hoops Mode and click on the hoop that you are going to use. (The hoop shown is the Bernina oval hoop 255 x 145.)
 15. With the hoop selected (it will have the solid black squares around it if it is selected), click on Edit > Rotate Right 45. Click Edit > Rotate Right 45 again. (I rotated to the right because the bracket on this hoop is on the left side of the hoop & when I hoop my fabric I want the bulk of the fabric to be to the left of the embroidery machine). (SS5)



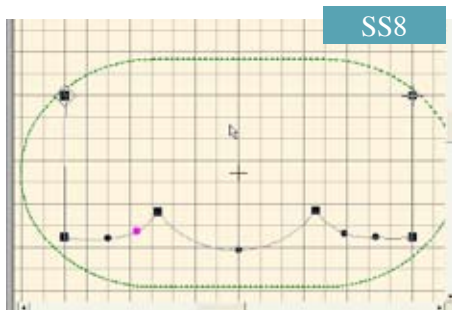
16. Click on **Designs Mode**.
 17. Select the straight line. Use the arrows on your keyboard to align it with one of the horizontal grid lines.
 18. Click on Edit > Reshape to add control points to the line so that we can reshape it into a scallop edge.
 19. Left mouse click on the line to create a corner point. Drag the corner point 6 1/2 squares below the left endpoint. Add another control point and place it below the right endpoint. (SS6)



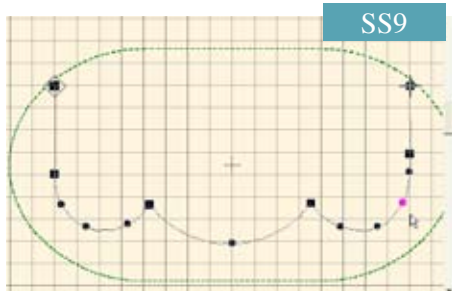
20. The crosshair in the center of the hoop denotes the center point between the ends of the straight line.
21. Right click on the straight line directly below the crosshairs. (Right clicking will change the square to a circle and make a curve control point.)
22. Drag this point straight down a little below the grid line just below the straight line. (SS7)



23. Left click along the stitched line (3 ½ vertical grid lines to the left of the center point). Drag the square point up two horizontal gridlines.
24. Left click along the stitched line (3 ½ vertical grid lines to the right of the center point). Drag the square point up two horizontal gridlines.
25. Continue placing control points until your project looks like the picture in SS8 below:



26. Change the corners to curves like the example below (SS9). Use the gridlines as guides to keep both sides looking the same. You may want to use the Zoom Tool (Zoom > Zoom In 2x) to for more precision.



27. Click on the escape key on your keyboard to exit the Reshape Mode.
28. Click on the Save button on the right side of the workspace.

29. You are now ready to start placing designs into your scallop.

Placing Designs Inside The Scalloped Area:

NOTE: You may add any design of your choice. The instructions below use designs from OESD Premier Collection 876 Nature's Serenity by Kathy Hatch.

30. Click on Tools > Filing Assistant.
31. If you are using the free scallop design for Design Connection members, find the location of the downloaded design on your computer. Drag and drop the scallop onto your workspace.
32. If you have purchased Collection 876, insert the CD or the USB stick into your computer. Use the Filing Assistant to find the location of the designs and drag and drop design #CC87613 on to the workspace. (SS10)
33. Click Edit > Rotate Right 45. Click



Edit > Rotate Right 45 again.

34. Drag the design to the center of the scallop. (SS11)
35. Click and drag design #CC87607 onto



the workspace & place into the center scallop area. Using one of the corner open handles (if the handles are solid black, click on the design to change them to open handles), rotate the design until it looks like the picture. Click on the design to change to the solid sizing handles and change the size of the design to approximately 2.06 x 1.73 (or a pleasing size to you).

36. On the right side of the workspace,

click Copy. Then Click Paste.

37. Select Edit > Mirror Horizontal.
38. Drag the copied design to one of the end scallops. Rotate it until it looks good to you.
39. Click Copy on the Right Tool Bar.
40. Click Paste. Select Edit > Mirror Horizontal.
41. Drag this design to the other scallop end.
42. Click on the Save button.
43. Add dragonflies from the collection if you would like.
44. Add an additional scalloped stitch to use as the final stitching line that allows us to stitch the front to the lining along the scalloped edge:
45. Select the scallop.
46. Click Copy on the right hand tool bar.
47. Click Paste. (SS12)
48. Click Save.

