

Paisley Butterfly Bed Drape

Created by Debbi Lashbrook

Simple but elegant... what better way to describe the designs from OESD's new collection, #12280 Paisley Butterflies! You will be amazed at how quickly these designs can dress up your new project. Use our instructions to dress up your bed and change the look of your bedroom by creating this easy-to-make, no pattern needed bed drape!

Supplies

Embroidery Designs

- OESD Signature Pack Paisley Butterflies #12280

Fabric & Trims

- Fabric for top and self-lining for the drape:
2¾ yards required for a king size bed drape with no seams
- Cording for edge of bed drape
6½ yards for a king size bed (or two times the width of the drape + two times the width of the drape + overlap)
- Flat trim for edge of bed drape
6½ yards for a king size bed (or two times the width of the drape + two times the width of the drape + overlap)

Notions

- OESD Isacord Embroidery Thread to complement fabric (sample uses #0108, 0112, 0640, 0672, 0722, 0853, 0934, 0945, 3331)
- OESD PolyMesh stabilizer
- 101 Quilt Basting Spray
- Jumbo Hoop
(or resize the design(s) as needed to fit the largest hoop available for your embroidery system)
- Mettler sewing thread for construction of drape

Machine & Accessories

- BERNINA Sewing & Embroidery Machine
- Jumbo Hoop
(or resize the design(s) as needed to fit the largest hoop available for your embroidery system)
- Bulky Overlock Foot #12/12C
- Double Cording Foot #59/59C or #60/60C



Cut Panels

Determine length of drape:

- Measure bed width
- Add the drop length desired for each side
- Add an additional inch for seam allowances

Determine width of drape:

- Add 1" to desired width (Note: the sample is 21" cut width; width of 20" + 1" seam allowance)

Cut two sections for the drape:

Length and width determined above

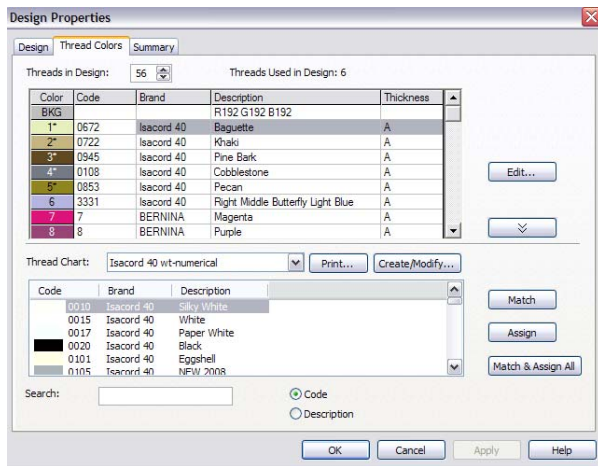
One section will be used for the embroidery, the other for the lining.

Note: The sample shows a king size bed; the mattress measures 76" across. A drop of 9" was added to each side for a total length of 94". One additional inch was added for seam allowances. The width of the sample is 20" plus 1" for seam allowances. Therefore the sample was cut 21" x 95".

Change Thread Colors (optional)

Change the Center Design thread colors in BERNINA Embroidery Software (optional).

- Open BERNINA Embroidery Software.
- Select File > Open and open design FQ865_48.
- Select File > Save As and name the design “Center Design.”
- Open the Thread Color Chart. Select Isacord 40 wt. numerical as the thread brand.



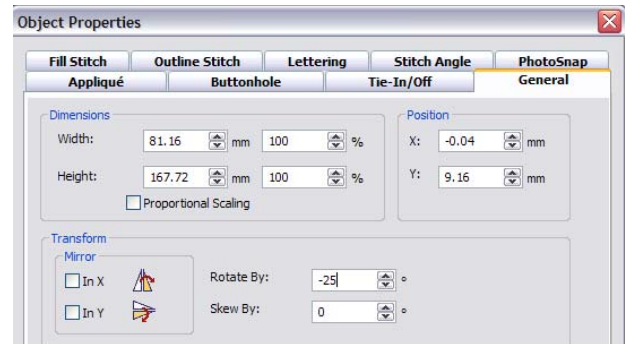
- At the top of the dialog box, select the first color used in the design. (Use the table below to change the colors of the design.)
- In the search box, enter the color indicated in the second column (Color New) of the chart.
- Press Enter on the keyboard to activate the new color and to advance to the next color.
- Repeat this process until all new colors are assigned.
- Press OK when you are finished assigning the new colors.
- Save your changes and send the design to the embroidery system for stitching.

Color Old	Color New
1	0672
2	0722
3	0945
4	0108
5	0722
6	0945
7	0108
8	0853
9	0112
10	3331
11	0112
12	3331
13	0853

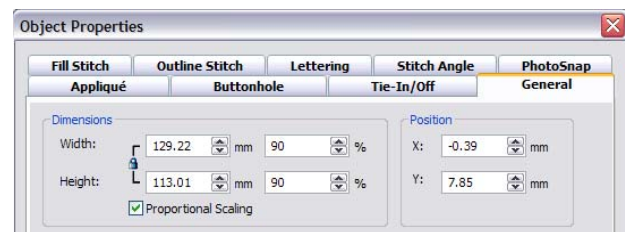
Combine Designs and Change Colors

Combine designs and change colors for the side designs in BERNINA Embroidery Software.

- Select File > Open and open design FQ865_48.
- Select File > Insert Design. Select design FQ858_48 and click on Open.
- Select File > Save As and name the design “Side Design.”
- While the design is still selected, move it away from the first design.
- Open Object Properties by right clicking on the selected design; select the General Tab.
- Rotate the design -25° . Click on Apply.



- Place a check mark in front of Proportional Scaling and resize the design to 90%. Click on Okay.



- Move the design as desired while it is selected.
- Open the Thread Color Chart. Select Isacord 40 wt. numerical as the thread brand.
- Select the first color used in the design. (Use the table below to change the colors in the design.)
- In the search box, type in the Color New; press Enter.
- Repeat this process until all new colors are assigned; press Okay.
- Save your changes and send the design to the embroidery system.

Color Old	Color New
1	0722
2	0740
3	0945
4	0722
5	0640
6	0112
7	0108

Embroider the Design

- ◆ Hoop the PolyMesh stabilizer in the Jumbo Hoop for the BERNINA 830 (or your largest hoop) and spray the top of the hooped stabilizer with 101 Quilt Basting Spray.
- ◆ Lightly press a crease in the vertical and horizontal center of your fabric. Align the center crease with the center of your hoop. Use a hoop template to check for accurate alignment. Readjust if necessary.
- ◆ Place the hoop on the machine and embroider the center design. Check to make sure that the design is rotated with the proper orientation. Also, make sure that the excess part of the bed drape is not under the machine.



- ◆ Use the software to print a design template to help determine the placement of the side designs. Mark the center horizontal and vertical lines of each of the side designs on the fabric.
- ◆ Hoop the PolyMesh stabilizer and spray the top of the hooped stabilizer with 101 Quilt Basting Spray.

- ◆ Use the hoop template to properly position the marked lines on the fabric in the center of the hoop.
- ◆ Embroider the design on the right side of the bed drape.



- ◆ Mirror image the design.
- ◆ Hoop another piece of PolyMesh stabilizer and spray the top of the hooped fabric with 101 Quilt Basting Spray.
- ◆ Use the hoop template to position the marked lines on the fabric left side with the center of the hoop.
- ◆ Embroider the design.
- ◆ Remove excess stabilizer from the back of the bed drape by trimming close to the embroidery.



Construct the Bed Drape

- ◆ Place Bulky Overlock Foot #12/12C on the sewing machine and stitch cording around all four sides of the embroidered piece, clipping the corners of the cording tape to turn the cording at each corner of the drape.



- ◆ Pin the remaining lining fabric piece to the corded fabric piece with right sides together.

- ◆ With the corded fabric piece on top, stitch around the bed drape, leaving an opening for turning. Move the needle position one step to the left to tighten the cording as you sew the lining to the embroidered fabric.

- ◆ Trim corners and press along the stitched line. Turn right side out. Press again along the edges.



- ◆ Move the needle position as necessary and stitch the opening closed with the cording foot.
- ◆ Place the flat trim along the edge of the bed drape, aligning one edge of the flat trim against the cording.
- ◆ Use Double Cording Foot #59/59C or #60/60C to attach the flat trim with a zigzag stitch. Alter the length and width of the zigzag stitch as necessary for the chosen trim. Use a matching thread color or invisible thread in the needle of the machine.



- ◆ Depending on the type of trim selected, turn the ends under where they meet or butt the edges up against one another and zigzag over the edges.
- ◆ Press the finished piece.

Place the bed drape over your comforter and enjoy your new creation!



[Visit www.berninausa.com today!](http://www.berninausa.com)