

BERNINA⁺

Rose Appliqué Half Slip Embroidery Project

Created by Pat Jennings



Elegant embroidery and monogram accents make a simple slip oh so pretty and feminine!

Learn to create appliqués easily using OESD Signature Pack #12252 - *Rose Appliqués*. Adding lettering to the design is a snap with BERNINA Embroidery Software!

Supplies

Embroidery Designs

- OESD Signature Pack #12252 - *Rose Appliqués* Design #FQ638

Machine & Software

- BERNINA Embroidery Software or Explorations Embroidery Software
- BERNINA Sewing & Embroidery System
- Oval Hoop
- 4 mm Roll & Shell Hemmer Foot #69
- Serger (optional)

Fabric & Notions

- Cotton Batiste (your hip measurement plus 6" by the finished length of the slip)
- Elastic (lingerie, stretch lace, or braided elastic) X your waist measurement plus ½"
- Lace for the lower edge of the slip (your hip measurement plus 6")
- Mettler Silk Finished thread to match the slip fabric
- Mettler Silk Finished thread to match the lace color
- Isacord Polyester Embroidery thread
- OESD Aquatear Embroidery Stabilizer
- OESD Appliqué Fuse & Fix (optional)
- Temporary Spray Adhesive (101 Quilt Basting Spray or 505 Spray and Fix)
- Organ Needles for Embroidery - Size 70/10 Sharp
- BERNINA® Needles – Size 70/10 Microtex

Visit www.embroideryonline.com


Your one-stop shop for embroidery designs and innovative embroidery accessories

Cutting Instructions

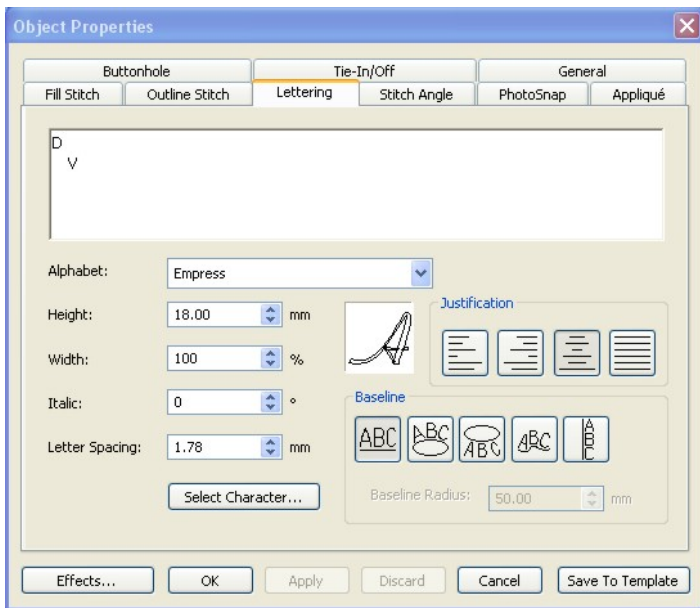
- Cut a rectangle of cotton batiste your hip measurement plus 6" by the desired finished length of the slip. If the measurement exceeds the fabric width, divide the measurement in half and cut two rectangles, on front and one back.
- Place a piece of lingerie elastic around your waist and pull it comfortably snug. Do not stretch the elastic. Cut the elastic this measurement plus ½".
- Cut a piece of edging lace the same width as the rectangle (your hip plus 6").


DesignerPlus Software -

Prepare the Design

- Open FQ638 from the Signature Pack #12252 - Rose Appliqués in your embroidery software.
- With the design selected, activate Mirror Horizontal. 

Add the Lettering



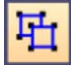
- Touch the A key on the keyboard to open the Object Properties Lettering box.
- Type the first initial and touch Enter. Touch the space bar 2 X and type the last initial.
- From the Alphabet menu select Empress. Set Height at 18 mm.
- Select OK .
- Click on the screen to position the lettering on the screen. Select and move the lettering into position on the right side of the design.
- If needed, with the lettering selected, activate Reshape Object. 

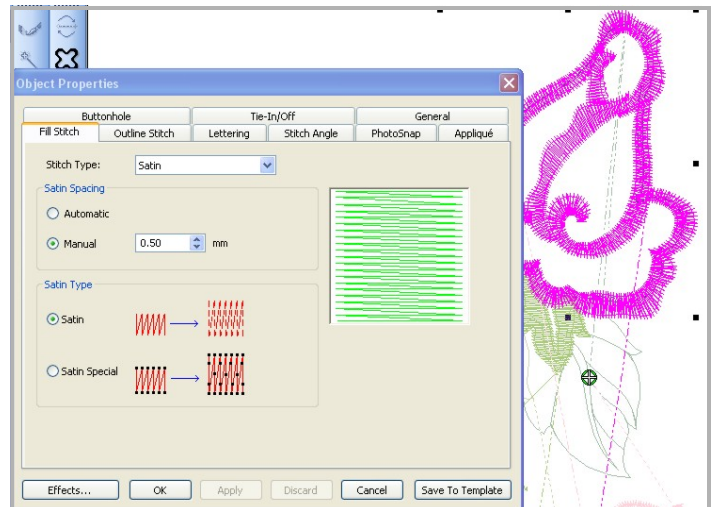
- Adjust line spacing and the position of each letter along the base line. Touch Enter to confirm the Reshape changes. Touch ESC to turn off Reshape.



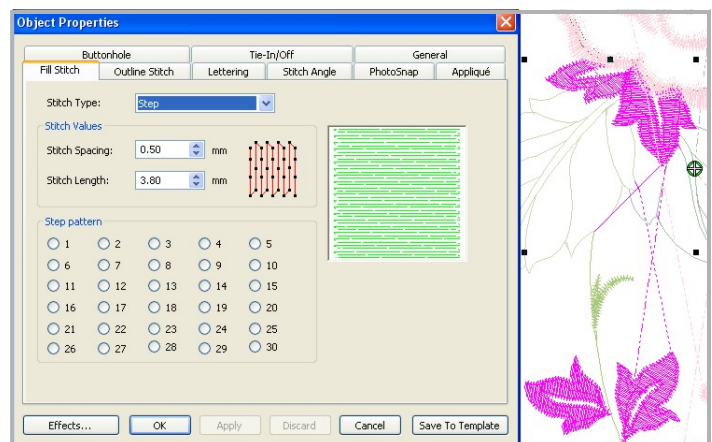
Density Reduction

- Because batiste is a light weight fabric it may be necessary to reduce the density of the satin and filled stitches in the design. This can be done in the software or within the embroidery program on the machine. If reducing density in the machine, reduce satin and fill density to 80%. Instructions given here are for reducing stitch density within the software.

- If necessary, ungroup the design. 



- Using color film, select the appliqué color stitch for the rose.
- Open Object Properties and select the Fill Stitch tab.
- Change Satin Spacing Manual to 0.50 mm and Apply.



- Using the Ctrl key on the keyboard to select multiple objects, select each of the leaves
- Change Stitch Values > Stitch Spacing to 0.50 mm and Apply. Close Object Properties.
- Save the design using a new name and transfer the design to the embroidery machine.

Embroider the Design

Stitch the Appliqué Design

- Place a centering positioning mark for the design in the lower right side (as you are looking at the fabric on the cutting table) of the fabric rectangle.
- Using a temporary spray adhesive, position a layer of OESD Aquatear stabilizer against the wrong side of the slip fabric using the centering mark to center the stabilizer.
- Hoop the stabilized fabric in the oval hoop and attach the hoop to the embroidery arm.
- **NOTE:** *The 3 colors used for the appliqué are color stops the digitizer has inserted into the design to stop the machine for you to place the appliqué fabric onto the design. You may use the Cover Stitch thread color to stitch the Placement Stitch, the Cut Line and the Tackdown.*

Pre-Cut Appliqué Option

- Stitch the Placement Stitch.
- Iron the appliqué paper onto the wrong side of the appliqué fabric following the Appliqué Fuse and Fix instructions.
- Print the appliqué template for the selected design. Roughly cut around the appliqué and spray the wrong side of the paper template with a temporary spray adhesive.
- Position the paper appliqué template on the right side of the fabric. Trim the appliqué fabric piece along the template lines.

- Peel the paper from the appliqué fabric piece and using the stitched Placement Stitch as a guide, position the appliqué fabric on the hooped slip fabric.



- Stitch the remaining colors of the design, changing threads as indicated.
- Remove the hoop from the embroidery arm and remove the fabric from the hoop. Following the stabilizer instructions, carefully remove the stabilizer from the wrong side of the slip fabric.

Trim-In-Place Appliqué Option

- Stitch the Placement Stitch. Position the appliqué fabric over the Placement Line. Stitch the Cut Line and stop the machine.

- Remove the hoop from the embroidery arm but do not remove the fabric from the hoop.



- Trim the appliqué fabric close to the Cut Line.
- Return the hoop to the embroidery arm and stitch the remaining colors of the design changing threads as indicated.
- Remove the hoop from the embroidery arm and remove the fabric from the hoop. Following the stabilizer instructions, carefully remove the stabilizer from the wrong side of the slip fabric.

Slip Construction

- If using separate front and back pieces, construct one side seam using a French Seam.
- Using the serger set for a rolled edge or a sewing machine with 4 mm Roll & Shell Hemmer Foot #69, finish the lower edge for the fabric rectangle with a rolled edge.
- With the lower edge of the lace and the rolled edge of the fabric matching, pin the lace to the lower edge of the fabric.

- Attach Edgestitch Foot #10/10C. Using a 1½ mm wide zig-zag and a 1½ mm stitch length, sew the lace header to the fabric, keeping the blade of the Edgestitch Foot #10/10C on the upper edge of the lace header.



Slip Construction, continued

- Fold the slip in half lengthwise. Sew the side seam of the slip using a French Seam.
- Using a serger or sewing machine, clean finish the upper edge of the slip.
- Sew the ends of the elastic together with a ¼" seam. Find quarter divisions on the elastic and the top of the slip. Pin the elastic to the top of the slip, matching quarter points.

Waist Elastic Finishing Options

Stretch Lace Elastic

- Pin the elastic to the top of the slip, matching the upper edge of the elastic to the upper edge of the slip.
- While stretching the stretch lace elastic to fit the slip fabric, stitch along the lower edge of the stretch lace elastic using a zig-zag stitch with a 3½ mm stitch width and a 3½ mm stitch length.
- Using appliqué scissors, trim the excess fabric from behind the stretch lace elastic.
- Steam the elastic without touching the iron to the elastic. Let cool completely before handling.



Braided Elastic

- Pin the elastic to the wrong side of the slip. While stretching the braided elastic to fit the slip fabric, zig-zag the left edge of the elastic to the slip using a 4 mm wide and 4 mm long stitch.
- Fold the upper edge of the slip down, encasing the elastic and stitch in place using a running stitch (Stitch #4) set at a 3½ mm stitch width and a 3½ mm stitch length.
- Steam the elastic without touching the iron to the elastic. Let cool completely before handling.



Picot Edge Elastic

- Pin the elastic to the slip, wrong side of elastic to right side of slip with the picot edge down. While stretching the picot edge elastic to fit the slip fabric, zig-zag the elastic to the slip using a 4mm wide and 4mm long stitch.
- Bring the elastic to the inside of the slip and stitch in place using a running stitch set at a 3½ mm stitch width and a 3½ mm stitch length.
- Steam the elastic without touching the iron to the elastic. Let cool completely before handling.

For additional projects and information...

Visit www.berninausa.com