

Lesson Objective:

To become proficient in using a variety of BERNINA presser feet and attachments.

Lesson Machine:

Any BERNINA sewing machine.

Lesson Activities:

Embellishing swatches of different fabrics with specialty techniques.

Experiment with a variety of specialty presser feet and attachments.

Lesson Outcome:

Completion of a fun tote bag embellished with a variety of sewing and embroidery techniques using specialty presser feet and attachments.

“Fabric is fun! And manipulating fabric is even more fun. Combining bright, colorful fabrics with manipulation techniques and an interesting pattern gives hours of enjoyment and results in a one-of-a-kind garment or project. The tote used here presents the perfect landscape for creative manipulations and in the process, you can learn a few tricks using some of the most popular specialty presser feet and attachments.

The Place to Start

The first part of the class is spent on embellishing fabric pieces that are the components of the *Too Foo Tote*.

Tip: Lay out the fabrics in the positions of the pattern pieces before you cut and attach a “post-it” note to each, reminding yourself of what you plan to do with that section.

The following techniques and presser feet will be covered:



Lyn Lackey
Educational Consultant
BERNINA of America, Inc.



- Piping
Bulky Overlock Foot #12/12C
- Pintucking
Pintuck Foot #32
- Decorative Stitching
Open Embroidery Foot #20/20C
- Bias Binding
Bias Binder #84 with Foot #94
- Gathering/Ruffles
Ruffler Attachment #86
- Sewing on Buttons
Button Sew-on Foot #18
- Couching
Bulky Overlock Foot #12/12C,
Braiding Foot #21
Cording Feet #22 & #25
Clear Appliqué Foot #23

Lesson Supplies:

- Too Foo Tote Pattern—available at your local BERNINA® store
- Fabrics - according to pattern
Use a combination of solids and prints.
Some manipulations work well with either, others definitely show better with solids.
- 505 Temporary Spray Adhesive
- Variety of Decorative Threads
- Embroidery Motifs as desired (optional)
- Decorative buttons as desired
- 1 yard of fringe or textured trim

Note: Specific threads, presser feet, and stabilizers are detailed for each technique on the page it is discussed.

Supplies for decorative stitching:

- Tearaway stabilizer
- Decorative thread
- Open Embroidery Foot #34

Preparation

Cut out the parts of the bag according to the pattern. Cut the squares that make up the body of the bag about 1" larger on all sides than the pattern directs. These will be trimmed to size after being embellished.

Note: If planning to stitch embroidery designs or monograms on any of the squares, cut these large enough to fit in the medium hoop. Back these with stabilizer and hoop the two layers together. Stitch designs as desired; trim squares to pattern size and set aside.



Decorative Stitching



Using temporary spray adhesive, bond stabilizer to the wrong side of the fabric. Attach Open Embroidery Foot #20/20C to the machine.

Stitch rows of decorative stitching as desired.

Combine decorative stitches to create Stitch Recipes, using a variety of decorative threads that coordinate with your fabric. Visit www.bernausa.com for Stitch Recipes ideas; also, see *Through the Needle* magazine.

After stitching is complete, carefully remove stabilizer from back of fabric.

Supplies for couching:

- Fusible interfacing to stabilize fabric
- Decorative yarn, cords and threads
- Any or all of the following presser feet:
 - Bulky Overlock #12/12c
 - Braiding Foot #21
 - Cording Feet #22 & 25
 - Clear Appliqué Foot #23
- Monofilament thread



decorative
cords with
Cording
Foot #22

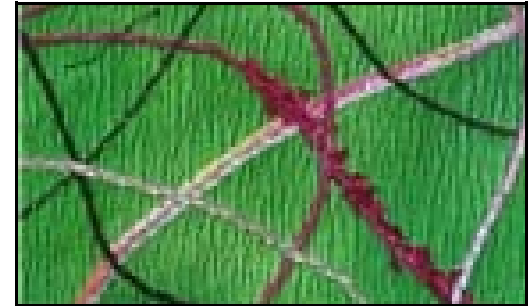
couching
with
Braiding
Foot #21



Couched Threads

A term borrowed from hand embroidery, “to couch” means to stitch over cord. Use the machine to apply cord to the surface of fabric for decoration, definition, or reinforcement.

A variety of stitches can be used to couch the cord. A blindstitch or a narrow zigzag stitch will be fairly inconspicuous in holding the cord in place, giving the cord prominence. A heavy, decorative stitch will be more visible with the cord taking a lesser role.



The choice of thread color will affect the appearance of the cord on the fabric:

- Match the thread color to the background fabric to give the illusion of the cord being woven into the fabric.
- Match the thread to the cord to give the cord a more pronounced look, adding to its thickness.
- Invisible thread will make the cord appear to float on top of the fabric.

Directions:

Fuse interfacing to the wrong side of the fabric.

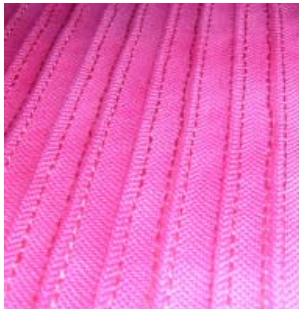
1. Thread the machine as desired; attach one of the couching feet listed in the supply list.
2. Insert cord or yarn into the foot.
3. Select a stitch as desired.
4. Stitch randomly over the fabric, creating a design with the cord or thread as you go.

Note: You can draw a pattern or guide on the fabric using a fabric marker if you want to have a plan to follow.

Tip: Decorative stitches with rayon threads over a colorful cord will give a dimensional look to the piece. Try 3mm. beads, ribbons—anything that will go under your presser foot. Let your imagination be your guide.

Supplies for pintucking:

- Pintuck Foot #32
- Double needle (3.0/90 or 2.5/80)
- Decorative thread (2 spools)
- 60 wt thread for bobbin
- Gimp cord



Pintucks

Insert Double Needle in machine and thread with two spools of thread as shown. Engage the Double Needle Function, if available.

Using a fabric marker, draw a line about 1" from one edge of the fabric. Stitch a pintuck on this line by centering the foot over it .

Continue stitching parallel rows of pintucks, spacing them as desired and aligning them as shown to the left.



align previously stitched pintuck in groove to stitch parallel rows

Supplies for grid quilting:

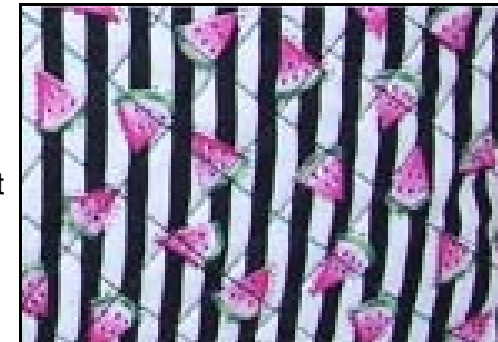
- Clear Foot #34/34C
- Quilt/Seam Guide
- Thread
- Thin batting same size as fabric
- EZ Glitzer (optional)
- Stones, pearls, jewels as desired (optional)

Grid Quilting

Place batting behind the fabric; bond together using temporary spray adhesive. Using a fabric marker and a ruler, draw a diagonal line on the fabric.

Attach Clear Foot #34/34C to the machine. Insert the Quilt/Seam Guide to the back of the foot and adjust it to be 1" from the needle.

Stitch along the marked line. Stitch a second line by placing the guide on the first line. Continue in this manner until the entire swatch is covered. Repeat the previous steps to stitch diagonal lines in the opposite direction.



Optional: Using the EZ Glitzer, attach stones or jewels at the intersecting lines.

Supplies for bias binding:

- Bias Binder Attachment #84 with Foot #94
- Bias strips



binding the edges of the handles

Supplies for piping:

- Bulky Overlock Foot #12/12C
- 12" of 1/8" cord
- Bias strip, 12" x 1 1/2"



Place the piping in the tunnel under the foot

Bias Binding

Create handles according to pattern directions, using the Fasturn Tool to quickly and easily turn straps to right side; press according to pattern directions.

Attach Bias Binder Attachment #84 with Foot #94 to the machine. Cut the end of the bias strip at an angle and feed into the binder; pull it back under the needle. Bind each side of the straps to add interest and reinforce the edges, adjusting the needle position to stitch on the edge of the binding. After binding the edges of the handles, continue stitching the bias strip to create 36" of bias cord. Cut this cord into four equal pieces and set aside.

Tips: When using the Bias Binder Attachment, bias strips must be 1 1/8" wide and it is a good idea to starch the fabric before cutting the strips. The extra sizing helps strip feed through binder more easily.

Assembling the Bag

After embellishing the squares, trim them to the size the pattern directs.

Construct the bag following the directions in the pattern adding piping and/or ruffled trim to the top of 2-4 of the pockets. Insert fringe or textured trim into the seam that attaches the body of the bag to the upper band.

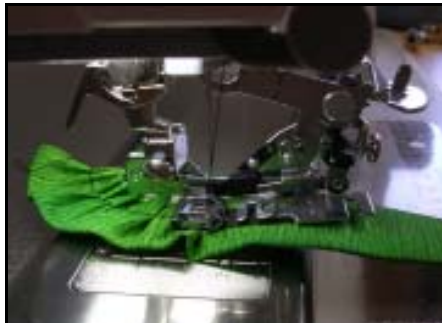


Piping

1. Use purchased piping or make your own. Cut strips on bias, to add interest to striped or patterned piping.
2. Cut strips 1 1/2" in width, wrap fabric around cord.
3. Use Bulky Overlock Foot #12 foot, basting stitch, right needle position - baste close to the cord.
4. Move needle one position to the left, stitch length 2.5mm, sew piping to fabric. Lay fabric, right side together, move needle one position to the left. again, sew, following previous stitching line. Sewing the piping to one piece of fabric at a time, insures a close even stitch and perfect insertion of the piping.

Supplies for ruffling:

- Ruffler Attachment #86
- Bias strip, 36" x 1½"



gathering a folded strip



stitching a button in place
With Button Sew-on Foot #18

Ruffling

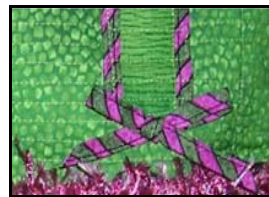
Fold bias strip in half lengthwise and press.

Attach Ruffler #86 to the machine. Feed the folded strip into the ruffler; sew a test and adjust the settings to give the desired fullness to the ruffle.

Insert the ruffled strip into the seam along the upper edge of a pocket.

Finishing

Stitch decorative buttons in place as desired using Button Sew-on Foot #18. Set the shank in the lowest position to stitch the button flat on the fabric without a thread shank.



Tie bias strips into bows and sew to lower edge of handles.

The Manipulations discussed here are only the beginning. You will find many more in books, magazines, and in your own head. Let your imagination go! You will find your self immersed and addicted to threads, feet, and fun as you explore all the wonderful techniques you can apply to fabric. With the addition of buttons, beads, ruffles, and embroidery motifs, the possibilities are endless.

*For additional information on any of the
presser feet and attachments, see Feet-ures,
Vol. 1 and 2 at your local BERNINA® store.*

