

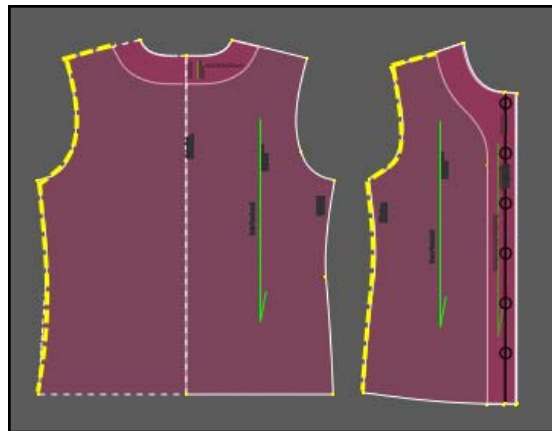


Making a Lining Pattern

- ◆ Superimpose the facing pattern on the jacket patterns—front and back.



- ◆ Trace around the outside edges of the pattern along the shoulder seam, armhole, and the side seams. (see yellow dotted lines) You only need to do one half of the back pattern.



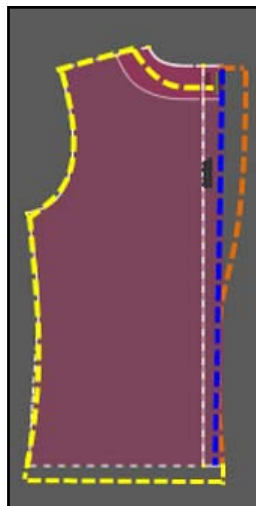
- ◆ Measure in from the facing edges, 1 1/4" to mark the inside cutting line of the lining.



- ◆ Extend the hemline of the lining 1/2" beyond finished length of the jacket and the sleeves—(not the cutting line for the jacket, but the turned up hemline). This is the cutting line for the bottom of the lining for the front, back, and sleeves.



- ◆ Cut the lining pattern following the yellow lines for the front and the sleeve.
- ◆ For the back pattern piece, cut around the yellow lines and on the CB fold line.
- ◆ Add a 5/8" seam allowance along the CB fold line (see blue line below).
- ◆ Add a 1 1/2" pleat beyond the CB seam allowance, tapering to nothing at the waist. (see the orange dotted line) This is the new cutting line for the CB of the lining.



- ◆ Sew together following the instructions in Sewing Techniques.

Visit www.berninausa.com
Projects • Webinars • Promotions