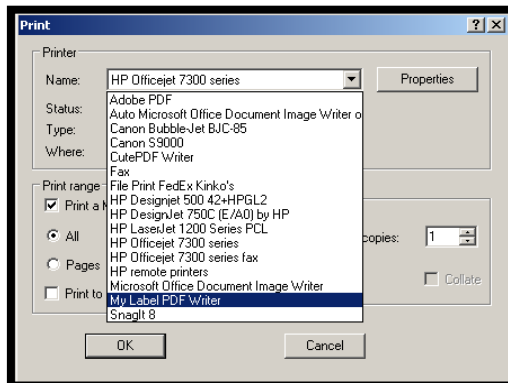


## Directions for Printing a PDF for a My Label Pattern

1. Select the PDF writer included on the My Label stick and download it to your computer.
2. After the writer has been downloaded, click on the Start button on your computer desktop and select Control Panel Printer and Faxes. Make sure that Cute PDF writer appears in the list of printers.
3. Click on Print in the main Toolbar in My Label. Decide whether you would like the pieces on your work table automatically arranged, placed close together, or if you would like to use the arrangement on the Work Table.
4. After a selection is made the print window will appear. Make sure that the PDF writer is defined as the printer of your choice.



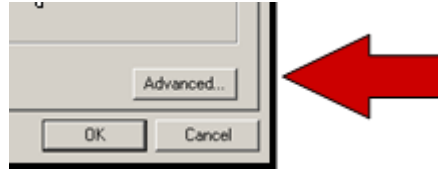
5. Click on the Properties button which is positioned beside the name of the printer to define the page layout and size.



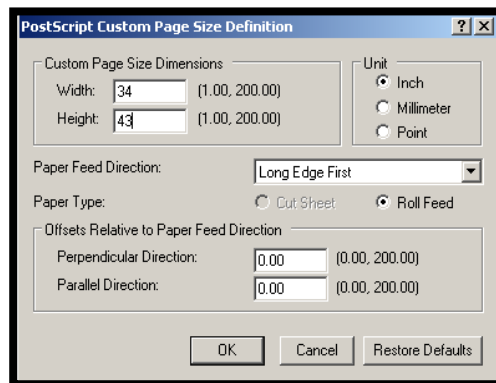
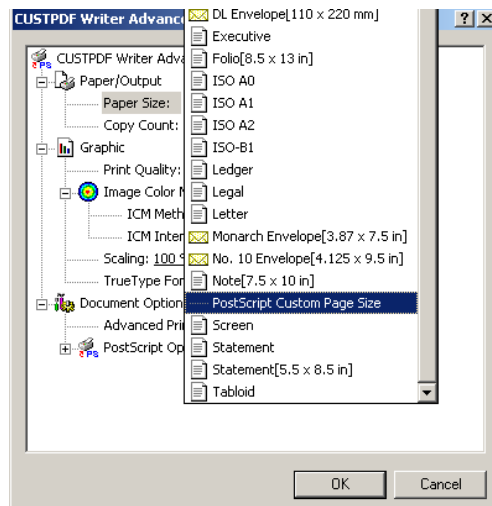
6. The PDF properties window will appear. If printing on a regular printer with standard size paper, select Portrait or Landscape format.

Note: It is recommended if printing on standard size paper, that the file be printed directly from the program to a printer

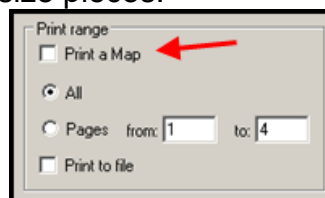
- Click on the Advanced button to select the desired paper size.



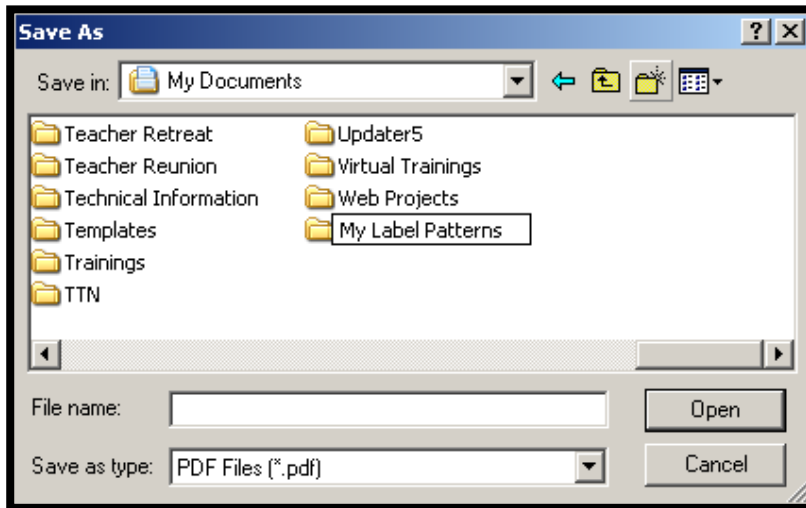
- If printing on a non-standard size paper, such as when printing to a plotter, select PostScript custom Page Size, then enter the dimensions of the paper in the dialog box. In addition, select Short Edge First, or Wide Edge First, depending on the orientation of your pattern pieces. Usually, this will be short edge first.



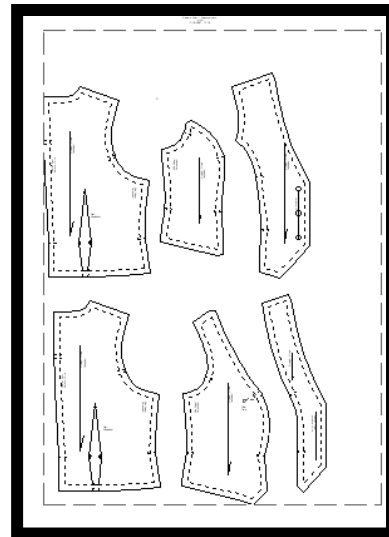
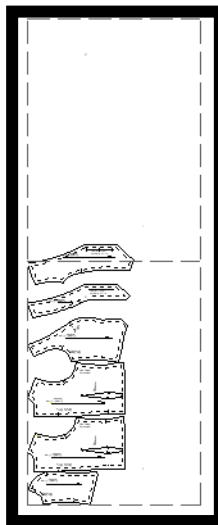
- Make sure you deselect "Print a Map. You do not need to print a map when printing on large size pieces.



10. Click on OK to print the pieces. You will be asked to save this file on your computer. This is the file that you will take to your local print shop for printing.



11. Note: Choosing option 3 for printing will allow you to rearrange the pieces for the most efficient use of paper. Zoom out on the worktable and move the pieces. Check the arrangement through print preview.
- Select pattern pieces & drag into place as necessary
  - Select pattern pieces and rotate as necessary
12. After rearranging, select Print Preview, option 3
- New arrangement shown will eliminate taping the pattern pieces
  - Toggle between Print Preview and worktable until pleased with the arrangement



13. After rearranging, save the file.