

FITTING COMMERCIAL PATTERNS WITH MY LABEL Dresses + Tops

Steps Involved:

- Decide what happened to the dart.
- What type of ease does the pattern have?
- Decide what My Label pattern to use to check the fit.
- Pin pattern pieces together if needed.
- Overlay and align the patterns.
- Analyze differences.
- Alter the commercial pattern.

Darts can be moved, combined, transformed into tucks, gathers, seamlines, or flare, or released; but they cannot be eliminated for woven fabrics

To check the ease in a commercial pattern: measure across bust or check on pattern piece to see if it is printed on the pattern

Which My Label patterns should be used for tops/dresses?

- For knit patterns with no dart: Use T-shirt pattern
- For patterns with a bust dart: Use tunic or tailored blouse
- For patterns with a princess seam: Use the princess dress
- For flat cuts on woven (no bust dart): Move dart in tailored shirt to the armscye

What are critical areas of fit?

- Dart placement/size of dart
- Shoulder slope
- Shoulder length
- Armscye depth
- Front length
- Width of pattern across front chest + shoulders
- Width of pattern at bust, waist, hip

Always look at the commercial pattern pieces and read the description to help evaluate how the garment is designed to fit and how it is put together

- The pattern diagram can give you clues to the shape of the pattern pieces + how they fit together
- Only need to check main pattern pieces—not collars, facings, bindings

- Also make note of the seam allowance allowed
- Realize if the shoulder slope is altered; corresponding changes might need to be made for the collar, do need to be made for the facing

To align the patterns: align stitching lines

For Bodice Front

- Match ML pattern and commercial pattern at CF & shoulder seam line for the bodice
- Remember to check for lap at CF if buttoned

For Bodice Back

- Align the shoulder seam and the center back seams of the ML pattern with that of the pattern

For Sleeves:

- Align bicep of sleeve
- Align centers of sleeve patterns



Areas to Check for Fit: Front

- Dart placement + size (if present)
- Shoulder slope
- Shoulder length
- Front length
- Front width at chest + shoulders
- Width at bust
- Width at waist
- Width at hip

Take advantage of multi-size pattern lines to add/subtract width where needed at bust, waist, and hip

Areas to Check for Fit: Back

- Shoulder slope
- Shoulder length
- Check the BWL
- Back width
- Across shoulder width
- Bust, waist, hip width

Critical Fit of Sleeve

- Check for sufficient width at bicep
- Check for sleeve length
 - Check for cuffs attached to sleeve
 - Check for dropped shoulders
- Sleeve cap depth
 - Is the sleeve set into a dropped shoulder?
 - Is it gathered?
 - Does it have shoulder pads?
 - Is it a flat pitch sleeve (for flat cut bodice)?
- Pitch of sleeve

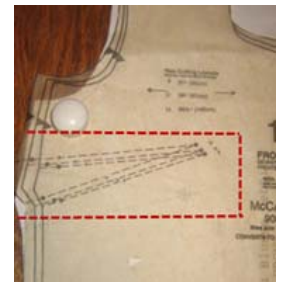
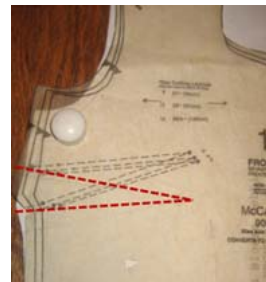
Check for Fit: Sleeve

- Bicep width
- Sleeve length
- Sleeve cap height
- Pitch of sleeve

Alterations:

Dart Placement

- Darts need to point to bust fullness
- Can redraw the lines to the point on the ML pattern or draw a box around and cut to lower entire dart

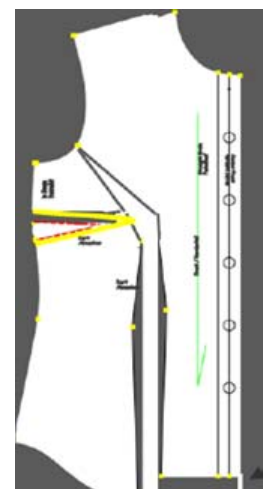


Dart Size

- Use protractor to measure difference in angle of commercial pattern and that of ML pattern
- Adding to size of dart:



1. Locate your apex (bust point) and mark the location on your pattern. The intersection of the end of the dart marks the apex.
2. Draw a parallel line to CF from apex to the hemline.
3. Draw a line for the desired bust position.
4. Draw a line from the apex to armscye, before the armscye begins to curve.
5. Slash as illustrated, using a pivot point at the bust point and armscye stitching lines.



6. Spread according to bust size— $\frac{1}{2}$ " for C cup, $\frac{3}{4}$ " for D cup, $1\frac{1}{4}$ " for DD or measure dart angle needed (or use protractor)
7. Tape on a piece of paper.
8. Make sure the pattern remains flat.
9. Draw the new dart, the dotted yellow line, set back 1" from apex of bust.
10. Extend the center front length even with the side length (see solid yellow line).
11. Same size vertical dart can be used

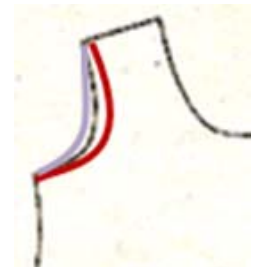
Shoulder Slope:

- Taper from neckline to shoulder point; do not change neckline at all
- Change front + back
- Measure the difference and add that amount to the armhole depth of the sleeve
- If more sloped than pattern—decrease the armhole depth of the sleeve and take away from the shoulder slope on the front and back



Chest Width

- Use Fashion Ruler to redraw the armhole
- Red shows subtracting; purple shows adding to chest width



Shoulder Length

- Broad shoulder length shown by purple
- Red shows narrow shoulders



Length Changes

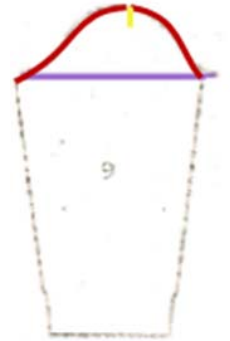
- Length alteration lines should be kept perpendicular to the grainline
- Changes to length made above the waist will change the front + back length to the waist
- Changes below the waistline will change the length of the top without changing the length to the waist
- Spread to increase BWL + front length
- Tuck one half the amount needed to shorten length

Width Changes

- Width alteration lines are kept parallel to the grainline to help maintain the natural shape of the design seams
- For many patterns, small changes in width can be made by redrawing the side seams of the front and back;
- Helps to have chosen the right pattern size to use; multi-sized patterns are an asset here
- Connecting sleeve must also be changed if a change is made for the bust—so the pieces fit together

Pitch of Sleeve: To make an upright sleeve pitched:

- Cut across sleeve at bicep line—move sleeve cap toward the front by $\frac{1}{2}$ "
- Redraw sleeve cap line, maintaining lower bicep size
- This will duplicate the pitch that is drafted into ML, but maintain the measurement of the armscye

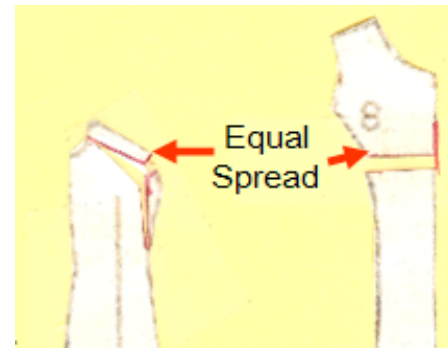


Princess Dress

For princess dresses, draw a line across commercial patterns to locate the waist position of each of the pattern pieces—CF, CB, side front and side back—this helps to align the pattern pieces of the side front and back with ML princess dress

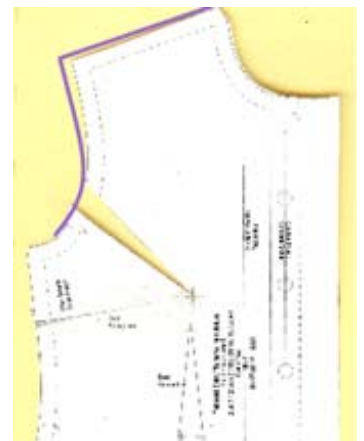
Alteration for bust of princess

- Horizontal alteration line is at bust position (widest part of pattern)
- Direction of slashes shown in middle; pivot point is at tip of short arrow
- Spread is
 - C cup— $\frac{1}{2}$ "
 - D cup— $\frac{3}{4}$ "
 - DD cup— $1 \frac{1}{4}$ "
 - DDD cup— $1 \frac{1}{2}$ "
- Adds to length and width—this will be the first alteration after shoulders



Converting Tailored Shirt to Flat Cut

- To compare commercial patterns that don't have a bust dart with a woven fabric, use tailored shirt pattern of ML
- With flat cut, bust dart is moved to armscye—can only effectively be done with a B cup dart
- Other cup sizes—best to still have bust dart; only remove 15° of dart
- To move bust dart:
 - Mark apex—intersection of ends of dart



- Draw slash lines into armhole and through bottom dart leg; using apex as the pivot point
- Close off dart by aligning the dart legs; creates opening in armhole
- Redraw shoulder slope and armhole to make a flat cut
- Flat cut uses small shoulder pad (1/4") to help support added length and shoulder slope
- Must do this before you compare the commercial pattern to the ML tailored shirt

Oversized patterns are flat cut—

Dart has been shifted to armhole

- If dropped shoulder, use combination of front + sleeve and back + sleeve to compare
- Sleeve cap will have flattened cap because of extended shoulder



Final Touches

- Blend all split apart patterns
- Measure all adjoining seams to make sure they are equal in length after alterations
- Make sure to alter all auxiliary pieces that need to be altered to match (facings, collars, bindings)