

## Embroidery Project

## My Label Tailored Shirt Fashion Petals Embellishment

Created by Elaine Cibelli



*Fashion Petals*, OESD Design Collection #12258 blends easy chic with contemporary elegance.

Stitched on silk or denim, the designs are just right for any garment or any occasion. Combined with the BERNINA My Label software you have the fit you deserve with the details you choose!



### Supplies

#### Embroidery Designs

- OESD Signature Pack Fashion Petals # 12258

#### Fabric & Notions

- Silk Dupioni (Sample is "Mist" from Brewer.)
- Armo Weft Interfacing
- Thread to match fabric
- Needle: Size 70 for the silk
- Marking pencil or Chaco liner
- Isacord Thread: 5822, 4332, 4111, 0776, 1375
- Aqua Tear Stabilizer
- 505 temporary adhesive

#### Machine & Accessories

- BERNINA My Label Pattern Software
- BERNINA Sewing & Embroidery Machine
- Embroidery Hoops
  - Artista 255 x 145 Oval Hoop or
  - Artista 400 x 150 Mega or
  - 830 Jumbo Hoop
- BERNINA Serger

### Visit...

[www.bernausa.com](http://www.bernausa.com)

Find additional BERNINA projects ,  
product information and promotions!

[www.berninamylabel.com](http://www.berninamylabel.com)

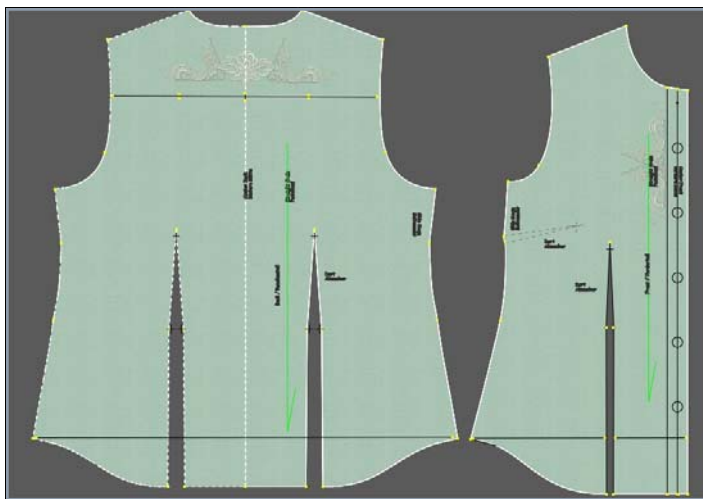
Create unique, well-fitting garments with  
My Label 3D Fashion Pattern Software.

[www.embroideryonline.com](http://www.embroideryonline.com)

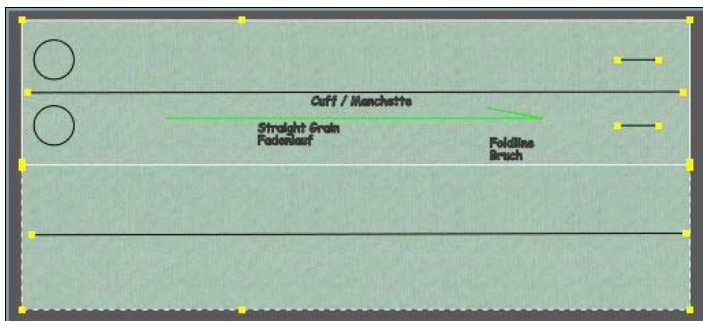
It's your one-stop shop for embroidery designs  
and innovative embroidery accessories.

## My Label - Tailored Shirt Details

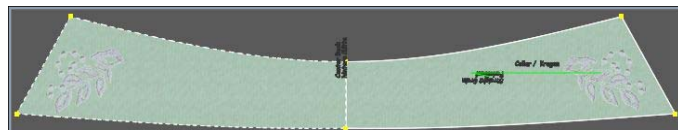
- Choose your model in the BERNINA My Label Software.
- In the *Style Drawer* select the *Tailored Shirt*.
- Change the *Style Properties* to create the shirt as shown:
  - ◊ Increase bust ease by 2" and *Accept* all other style properties, automatically changed. Increase bicep and wrist ease by ½ inch.
  - ◊ Remove shirt tails by adding a cutting line from side seam to side seam using the pencil tool and the straight stitch from the *Stitches Drawer*.



- ◊ Add a yoke to the back of the shirt using the pencil tool. From the *Stitches Drawer* select the *Straight Stitch* and create the yoke by adding a line to the back pattern piece approximately 1/3 down the armhole. Add reference marks to the back and yoke pattern piece. Use the pencil tool again to mark center back and notches midway between center back and armhole.



- ◊ Add Design Placement Lines to the cuff by selecting the *Straight Stitch* and drawing a line in between the button and the buttonhole placement. Add two lines for embroidery on both sides of the cuff. When the cuff is not buttoned and turned back, the reverse of the cuff will also be embroidered.



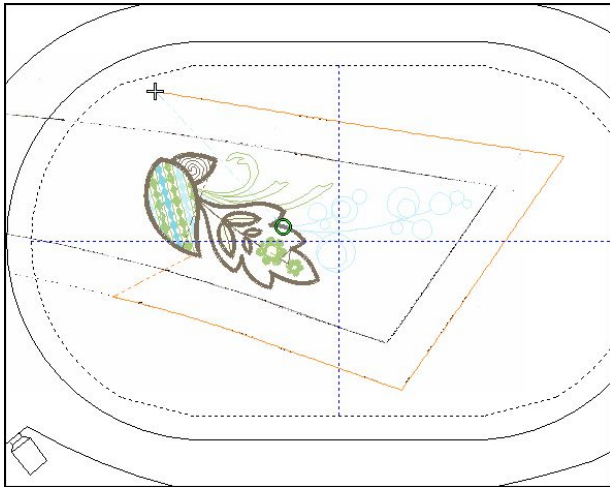
- ◊ Addition collar design placement by choosing a similar design from the *Embroidery Drawer*. Position and scale.
- ◊ Save the pattern as Fashion Petals Tailored Shirt.
- ◊ Print the pattern. Cut on the back pattern piece at yoke and make a manual notation to cut 2 of yoke and add 5/8" seam allowance to yoke and back pattern.
- ◊ Cut out the fabric, transfer markings using the marking pencil or Chaco liner.
- ◊ Overlock all side, shoulder and sleeve seams. Stitch darts and front bands following the pattern instructions. Stitch darts and front bands following the pattern instructions.

## DesignerPlus Software - Embroidery Design Preparation

- Shirt Fronts
  - ◊ Using the BERNINA DesignerPlus Software, open **Fashion Petals** design **FQ744-48**. Right click on the hoop icon and use the drop down arrow to select the 255x145 Oval hoop w/X-Y lines. Save As - *FPleft front*. Select the *Print Preview* icon, check the *show hoop* option and print template. Select the design again, mirror horizontal, Save As - *FPright front* and print template.
- Yoke
  - ◊ Open **Fashion Petals** design **FQ745-48**. Right click on the hoop icon and use the drop down arrow to select the *Mega* hoop for Auto Split machines. Save As - *FPyoke*. In Print Preview select the *show hoop* option and print a template.

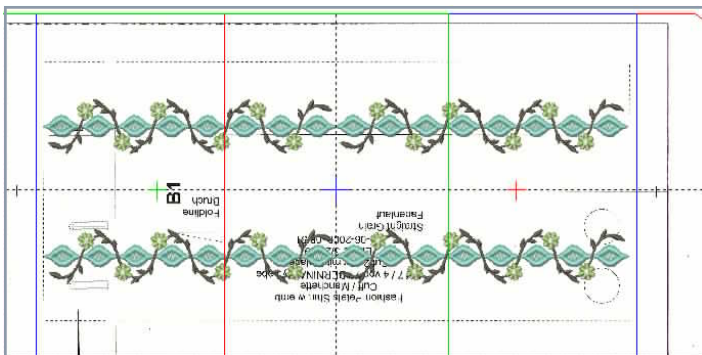
*Continued next page...*

## DesignerPlus Software - Embroidery Design Preparation, *continued*



- Collar

- ◊ Scan the collar pattern to the foldline in Picture view. In Design view, create a placement line by tracing the cutting line of the collar pattern using the *Open Object Tool* and a *Straight Stitch*. Insert **Fashion Petals** design **FQ732-48**. Move and rotate the design into desired position. Save As - *FPcollar*.



- Cuff

- ◊ Scan the cuff pattern in Picture view. In Design view, create a placement line by tracing the cutting line of the cuff pattern using the *Rectangle Tool* and a *Straight Stitch*. Insert **Fashion Petals** design **FQ742-48** and group. While still selected, use the *Wreath Tool* x 2 to create a vertical line. Resize to fit the cuff pattern by dragging the design handles. Group using *Group* icon. Save As - *Fpcuff*.

- Transfer all designs to the machine via a USB stick or cable.

## Embroidery

- Shirt Fronts

- ◊ Hoop Aqua Tear Stabilizer in the 255x145 hoop and spray lightly with 505 Temporary Adhesive. At the embroidery machine retrieve the *Left Front* design. Place the left front fabric on the stabilizer using the paper template to align. Position the marked design center directly under the needle. Reposition as needed and embroider the design.
- ◊ Repeat using the right front design on the right front fabric.



- ◊ **830 Machines:** Use the Jumbo hoop and hoop the right front and left front fabric pieces, butting the front bands together. Retrieve the *FPfront left* design and position the design using *Move Motif* and *Absolute Check*. Select *Add Motif* icon to retrieve the right front design. Use *Move Motif* and *Absolute check* to align the designs perfectly in the hoop. Activate the *Color Re-sequence* icon to combine like colors and reduce color changes. Activate the basting box around the design. Embroider the design.

*Continued next page...*

## Embroidery, *continued*

### • Yoke

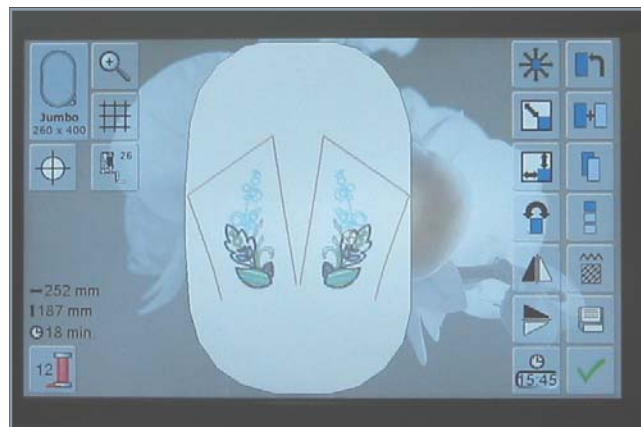


- ◇ Retrieve the *FPyoke* design. Follow the same procedures for the yoke using the Mega Hoop, centering the design to the center back markings.
- ◇ 830 Machines: – Use *Move Motif* and *Absolute check* to make perfect alignment a breeze. Add a basting box around the design for additional security.

### • Collar



- ◇ Hoop Aqua Tear stabilizer and place the hoop on the machine to stitch the digitized placement (cutting) line. Remove from machine and spray stabilizer with 505 Temporary Adhesive. Retrieve the *FPcollar* design. Place one side of the collar on the placement line and embroider the design. Remove from the hoop.
- ◇ Reverse the design using Horizontal Mirror Image. Hoop the stabilizer, stitch the placement line, spray the stabilizer with 505 Temporary Adhesive and embroider the opposite side of the collar.



- ◇ 830 Machines – Retrieve the *FPcollar* design, select the Jumbo hoop. Duplicate and select *Right/Left Mirror Image*. Move Motif to the right so that both design placement lines are close to, but not outside the edge of the hoop. Hoop Aqua Tear stabilizer and stitch the placement line. Spray the stabilizer with 505 Temporary Adhesive and position the collar piece on the placement lines making sure the center of the collar is out of the stitching area. Embroider.



### • Cuffs

Hoop Aqua Tear stabilizer in the Mega hoop and place the hoop on the machine to stitch the placement line for the cuff. Remove from the machine and spray stabilizer with 505 Temporary Adhesive. Place the cuff fabric on the placement line and embroider.

Mirror image the design for the remaining cuff. Hoop the stabilizer, stitch the placement line, remove from the machine and spray with 505 Temporary Adhesive. Place the second cuff fabric on the placement line and embroider.

## Garment Construction

- Tear away all excess stabilizer. Place the back and embroidered yoke right sides together matching center back and notches. Add the second yoke to the wrong side of the back (the back is now sandwiched between the two yokes). Pin. Stitch using a 5/8" seam allowance.
- Construct the rest of the garment according to the pattern instructions.
- *Enjoy!*