

BERNINA Embroidery Software 6 In the Hoop Pocket Purse



Open a Blank Design File

- Select *File/Save As*. Select My Computer: C: My Documents
- Select the *New Folder* icon and while the folder is highlighted, name the folder where the design will be stored.
- Select *Open*, name the file "Pocket Purse 1" > *Save*
- Right click on the *Hoop Icon*
 - ◇ Make sure *Display Hoop* is checked
 - ◇ Select artista 255 x 145 Oval from the drop-down hoop menu
 - ◇ Select *Manual* position
- Select *Grid Tab*
 - ◇ Select *Show Grid*
 - ◇ Deselect *Snap to Grid*.
 - ◇ Change the grid spacing to 13mm (.50 ")
- Select *OK*



Tip: Save your designs early and often, don't wait until you finish working. To save changes to an existing file and preserve the original **Save As**. Once you have saved a design, every time you click **Save** on the toolbar the file will be updated.

Art Canvas

Design a Shape in Art Canvas / Convert to Embroidery



- Switch to Art Canvas mode.
- Select the *Object Shapes Tool* > Select the *Rectangle* from the fly out menu.
- Click on screen and drag the mouse to draw a rectangle
- Press ESC to deselect object
- Click on Select Object Graphic
- In the Property Bar > Select *millimeters* in the *Units* drop menu
- Edit > Select All > Objects (CTRL +A)
- In the Property Bar
 - ◇ Change the width to 120 mm and the height to 175mm-(4.75" x 6.875")
- Press Enter on keyboard to activate the changes.
- Select *Convert to Embroidery*



x:	-30.685 mm	↔	120.0 mm	138.3 %	🔒	↺ 0.0 °
y:	26.452 mm	↕	175.0 mm	201.7 %		

Tip: Adjust the shape by entering the exact size in the Property Bar.

Reshape Stitches

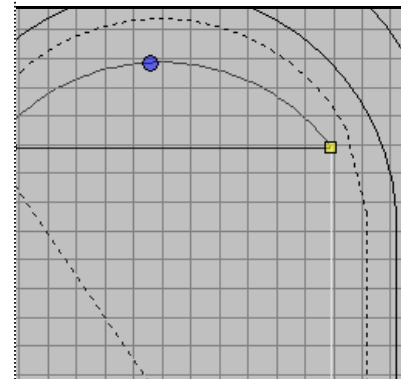


- Select *View > Zoom Out 2X*, to view the entire hoop.
- With the rectangle selected; center the design in the hoop
- Select *Reshape Object*
- Right Click on the center of the upper line on the rectangle, hold and drag the new node up three grid squares.
- Press Enter



Duplicate/Change Color

- Click on *Select Object*
- Select Edit > Duplicate (*Ctrl + D*)
- Select the *Color Bar* > Select color C16





Add Fill Stitches

- Select *Fill* from the *Stitch and Color Bar*
- Open Object Properties Box
 - ◊ Select the *Fill Stitch* tab.
 - ◊ From the *Stitch* type down menu select *Pattern Fill*.
 - ◊ Click on *Select*, from the *Heirloom patterns* > select #717 and OK to close the dialogue box.
 - ◊ Change the *Row Offset* to 5mm
- Select OK
- Click away from the design to deselect
- Select Save



Adding a Rectangle with the Rectangle Tool

- Select the *Rectangle Tool*
- Left click and drag to draw a rectangle about 4 grid spaces high x 8 grid spaces wide.
- Position the rectangle about 1 grid row above the bottom of the purse shape. Left click to set the shape.



Aligning Objects

- Select *Edit > Select All (Ctrl +A)*
- Select *>Align Centers Vertically* from the *Arrange Toolbar*
- Press ESC to deselect



Remove Overlaps

- Open *Color Film* > Select the last color chip, the small rectangle
- Select *Remove Overlaps (Arrange> Remove Overlaps)*



More Fill Stitches, Rotate Patterns

- With small rectangle selected > Right Click to Open *Object Properties*
 - ◊ Select the *Fill Stitch* tab.
 - ◊ From the *Stitch* type down menu select *Pattern Fill*.
 - ◊ Click on *Select*, from the *Heirloom patterns* > scroll and select # a705
 - ◊ Change *Rotation Angle* to 45°
 - ◊ Click OK to close the dialogue box.
- Select the *Color Bar*, change color to C17
- Select *Edit > Duplicate (Ctrl + D)*

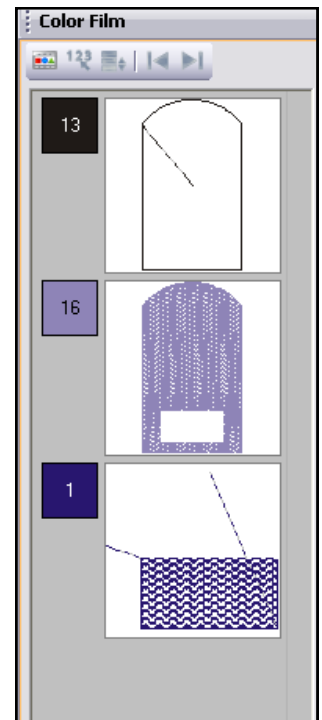


Add Satin Stitch Outline and Underlay

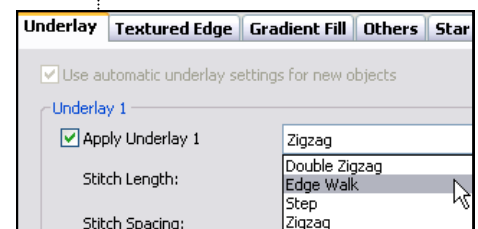
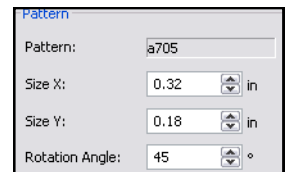
- With rectangle selected > Select *Outline* in the *Stitch and Color Bar* > select *Satin* from the drop down menu
- Right Click >Open Object Properties > Select Outline Stitch Tab
 - ◊ Select *Effects*
 - ◊ Select *Apply Underlay 1*
 - ◊ Select *Edge Walk* from the drop down menu
- Select OK
- Select *Show All*.
- Touch the “T” key on keyboard to *Show Artistic View*
- Select *File > Save As > Purse Pocket 2*



Tip: Use *Remove Overlaps* to remove underlying layers of stitching. This helps to reduce the stitch count and prevent a build of stitches where they are not needed.



Tip: Check the color film to confirm the removal of desired stitches.



Art Canvas

Return to Art Canvas mode

- Switch to Art Canvas mode.
- Select the *Object Shapes Tool* > Select the *Ellipse* from the fly out menu.
- Click on screen and drag to draw an oval on the top of purse image
- Change the width to 45 mm and the height to 30 mm
- Press Enter on keyboard to activate the changes.
- Select *Convert to Embroidery*
- Select *Fill* from the *Stitch and Color Bar* > Select *Step* from the drop down menu



Aligning Objects / Removing Overlaps

- Select Edit > Select All (Ctrl +A)
- Select >Align Centers Vertically from the *Arrange Toolbar*
- Select Show All
- In *Color Film* > Select the last color chip, the oval
- Select *Remove Overlaps* (*Arrange> Remove Overlaps*)

Change Stitch Properties

- With oval selected > Select *Outline* from the *Stitch and Color Bar* > Select *Single* from the drop down menu
- Open *Object Properties* > Select the *Outline Stitch* tab.
 - ◊ From the *Stitch type* down menu select *Pattern Run*
 - ◊ Select > *Pattern* > *Home Dec* > scroll and select # a401
 - ◊ Change *Size* to 5.5mm
 - ◊ Change *Spacing* to 5.5mm
 - ◊ Select *OK*
- Select the *Color Bar* > Select *color C16*
- Press ESC to deselect
- In *Color Film* > Select the first color chip, single stitch outline
- Open > *Object Properties* > Select the *Outline* tab
 - ◊ Select *Satin* > *Satin Values Box*,
 - ◊ Change *Satin Width* to 3mm.
 - ◊ Select *Effects*
 - ◊ Select *Apply Underlay 1*
 - ◊ Select *Edge Walk* from the drop down menu > Select *OK*
- Select *File* > *Save As* > *Pocket Purse 3*



Color

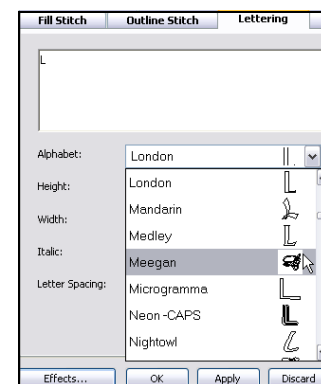
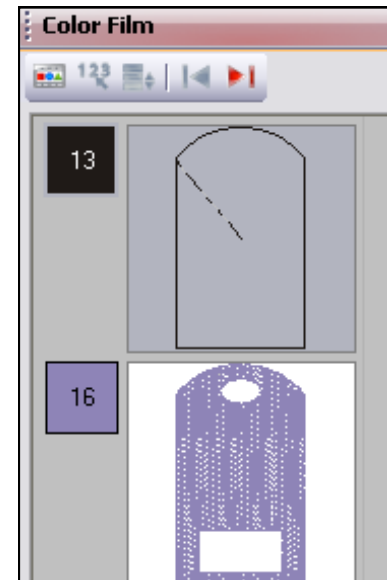


Outline

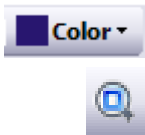


Add Lettering

- Right click on the *Lettering/Fill Values*
- Type in an initial in letter text box
- From the *Alphabet* drop down menu > Select *Meegan* font
 - ◊ Change the letter height to 13mm
- Select *Apply*
- Click on screen in the center of oval to create letter, position letter in oval
- Select the *General Tab*
 - ◊ Change *Rotate By* to 180°
 - ◊ Select *OK*



Tip: Be sure to check the minimum/ maximum letter height recommendations for each alphabet and stay within those for best results.



- Use the arrow keys on the keyboard to fine tuning the letter placement.
- Select the Color Bar > Select color C16
- Select Show All
- Select *File* > *Save As* > *Pocket Purse 4*



Resequence in Color Film

- Select the first color chip in the Color Film, satin outline.
- Select *Sequence to End* to place the satin outline at the end of stitching.
- Select the Color Bar > Select color C16
- Edit > Select All (CTRL + A)
- Right Click on the *Color Film* > *Select Group*

Previewing the Finished Design

- Touch the “T” key on keyboard to turn off *Show Artistic View*
- Select *View* > *Slow Redraw*.
 - ◊ Click on the *Play* to watch the design virtually stitch.
 - ◊ Click on *Pause* to stop; Click on the *Play* button to restart.
 - ◊ Click on *Stop* to end the slow redraw.
 - ◊ *Back to Start* will take the redraw back to the beginning of the stitching.
 - ◊ You can type in a range of stitches in the dialog box and view the stitch range as it redraws. Click on the *Play* button to begin.
 - ◊ Close the slow redraw box by clicking on the X.
- Save the design file.
- Click on the *Write to Machine* icon.



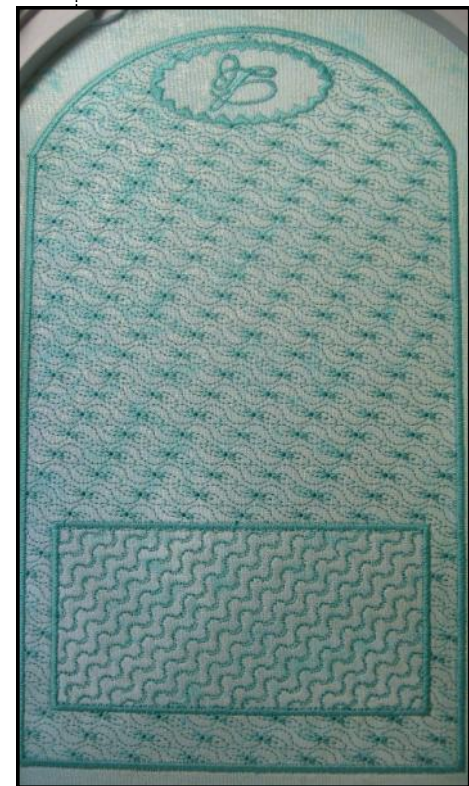
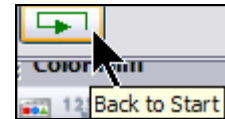
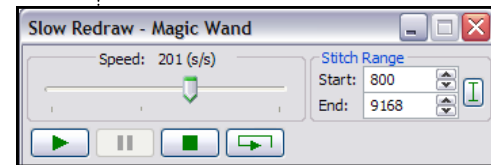
Instructions for embroidering and completing the Pocket Purse

- Cut 1– 10” X 15” OESD MediumWeight Cut-Away
- Cut 2- 10” x 15” pieces of fabric
- Spray temporary spray adhesive to one side of stabilizer.
- Place one piece of fabric right side up on prepared stabilizer.
- Repeat for other side, creating an embroidery sandwich.
- Hoop prepared fabric sandwich in Large Oval Hoop.
- Thread top and bobbin of embroidery machine with Isacord thread.
- Embroider the design.
- Remove hoop and remove embroidery from hoop.
- Trim close to outside of satin border to remove excess fabric.
- Sew hoop and loop tape to the flap and purse.
- Fold straight edge of purse to beginning of flap to make a fold
- Zigzag sides together, sewing from fold to flap on each side
- Enjoy!



Tip: The *Slow Redraw* tool lets you simulate the actual embroidery design stitch out on screen.

Slow redraw cannot be used with *Artistic View* only *Stitch View*.



Visit www.berininausa.com